

bourdon tube pressure gauges all stainless steel construction DS 1.5", 2" (40-50 mm)



PED 2014/68/EU



These instruments are designed for use in chemical and petrochemical processing industries, and in conventional power plants, to measure gaseous or liquid media which do not have high viscosity or do not cristalize. They are built to resist the most severe operating conditions created by the ambient environment and the process medium. For use on power units, pumps, hydro-cleaning machines, presses, engine compressors, turbines, diesel engines, chemical, petrochemical and refrigerating plants and on machines and equipment where pulsating pressures or mechanical vibrations are apparent, the liquid-filled version is recommended.

01.18.1 - Standard Model, DS 1.5" (40mm)

Design: EN 837-1.

Ranges: from 0...30 to 0...600 psi (from 0...2.5 to 0...40 bar or equivalent units).

Accuracy class: 1.6 as per EN 837-1.

Ambient temperature: -13...+149 °F (-25...+65 °C).

Process fluid temperature: -22...+212 °F (-30...+100 °C).

Thermal drift: ±0,4 %/10 °C of range (starting from 68°F - 20°C).

Working pressure:

75% of FSV for static pressure;

66% of FSV for pulsating pressure.

Over pressure limit (15 min max):

25% of FSV.

Protection degree: IP 55 as per EN 60529/IEC 529.

Socket material: AISI 316L st.st.

Bourdon tube: AISI 316L st.st.

Case: stainless steel.

Ring: stainless steel, bayonet lock.

Window: glass.

Movement: stainless steel.

Dial: aluminium, white with black markings.

Pointer: not adjustable, aluminium, black.

01.18.1 - Standard Model, DS 2" (50mm)

Ambient temperature: -13...+149 °F (-25...+65 °C).

Protecti on degree: IP 55 as per EN 60529/IEC 529.

Case: stainless steel, crimped.

Ring: stainless steel, crimped.

Window: plastic.

Other features: as Standard Model, DS 1.5" (40mm).

01.18.2 - Fillable Model, DS 2" (50mm)

Protecti on degree: IP 67 as per EN 60529/IEC 529.

Other features: as Standard Model, DS 2" (50mm).

01.18.3 - Filled Model, DS 2" (50mm)

Damping liquid: glycerine 98%.

Ambient temperature: +32...+149 °F (0...+65 °C).

Process fluid temperature: max +149°F (+65 °C).

Protecti on degree: IP 67 as per IEC 529.

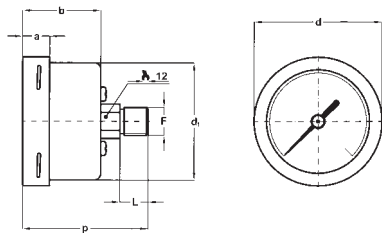
Other features: as Standard Model, DS 2" (50mm).

bourdon tube pressure gauges

all stainless steel construction, DS 1.5", 2" (40-50mm)

MGS18

RC6-08/13

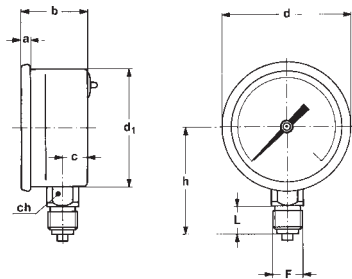


DS 1.5" (40mm)
D - BACK CONNECTION

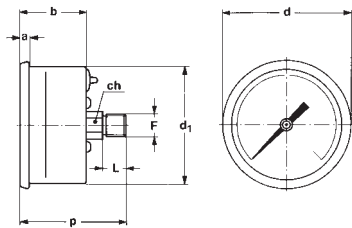
Mounting	DS	F	a	b	c	d	d ₁	h	p	L	ch	Weight (1)
Lower	B 2" (50)	21M - G 1/4 A	0.15"	1.14"	0.43"	2.20"	2.00"	1.94" - 1.87"		0.59" - 0.51"	0.55"	0.20 lbs
		23M - 1/4-18 NPT	(4)	(29)	(11)	(56)	(51)	(49,5 - 47,5)		(15-13)	(14)	(0,095 kg)
Back	A 1.5" (40)	11M - G 1/8 A	0.37"	1.08"		1.77"	1.61"		1.73"	0.39"	0.47"	0.15 lbs
		13M - 1/8-27 NPT	(9,5)	(27,5)		(45)	(41)		(44)	(10)	(12)	(0,07 kg)
	B 2" (50)	11M - G 1/8 A	0.15"	1.14"		2.20"	2.00"		1.81"	0.39"	0.47"	0.17 lbs
		13M - 1/8-27 NPT	(4)	(29)		(56)	(51)		(46)	(10)	(12)	(0,078 kg)

dimensions : inches (mm)

(1) add 0.09 lbs (0,045 kg) when filled



DS 2" (50mm)
A - LOWER CONNECTION



DS 2" (50mm)
D - BACK CONNECTION

OPTIONS

Diameters	DS 1.5" (40mm)	DS 2" (50mm)
B - "Ring"-clamp, for back connection pressure gauges		◆
E65 - IP 65 execution	◆	

"HOW TO ORDER" SEQUENCE

Section / Model / Case / Mounting / Diameter / Range / Process connection / Options						
1	18	1	A	A	11M	B
		2	D	B	13M	E65...T30
		3			21M	
					23M	



IN ORDER TO IMPROVE THEIR PRODUCTION, MESSRS. NUOVA FIMA RESERVE THE RIGHT TO THEMSELVES TO MAKE ALL THE MODIFICATIONS THAT THEY DEEM INDISPENSABLE AT ANY TIME. UPDATED DATA-SHEETS ARE AVAILABLE ON SITE: www.nuovafima.com