

BICOLOUR LEVEL GAUGES



DESCRIPTION

The bicolour level gauges allow a sure and clear reading of the level in case of the fluid is water steam.

The operating principle is the different index refraction of the light in the water and steam. According the above, the special construction of the body and the special illuminator used, we can observe the **red** colour in correspondence of STEAM and **green** colour in correspondence of water.

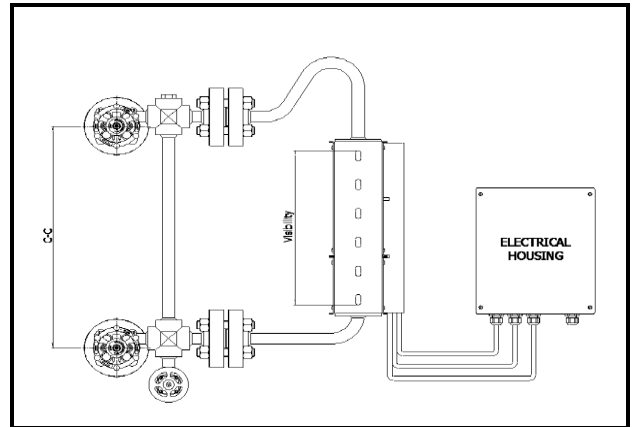
The bicolour level gauges are manufactured with large window for low and medium pressure and circular window (port hole) for high pressure.

BICOLOUR LEVEL GAUGE MODEL BHO:

- For Operating Pressure max 210 bar @ 368°C

Size	Q.ty of port holes	C to C	Visibility
4	4	390	229
5	5	460	299
6	6	530	369
7	7	600	439
8	8	670	509
9	9	740	579
10	10	810	649

Different visibility length can be supplied on request

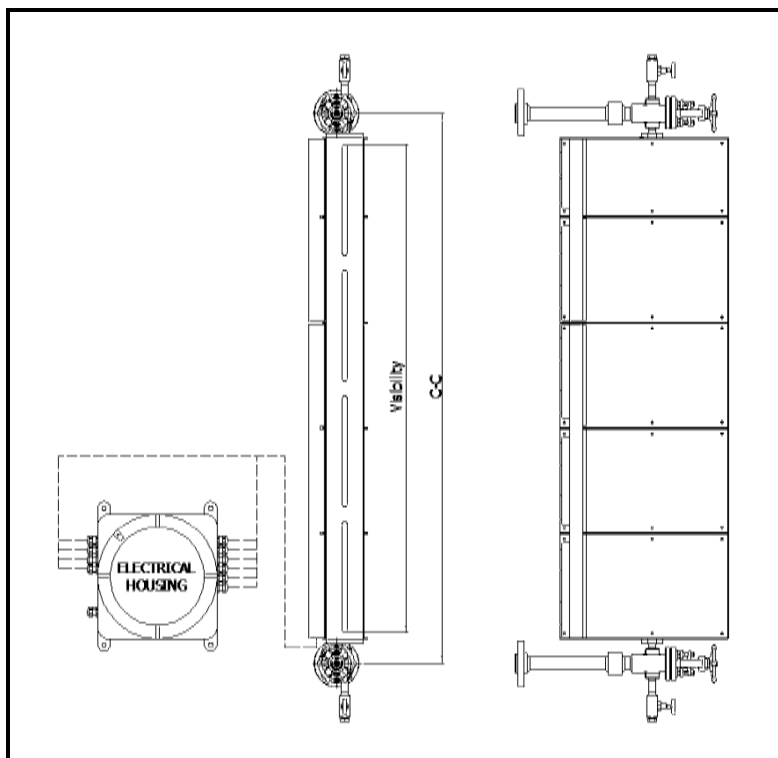


BICOLOUR LEVEL GAUGE MODEL BHC:

- For Operating Pressure max 40 bar @ 249°C

BICOLOUR LEVEL GAUGE MODEL BHH:

- For Operating Pressure max 90 bar @ 302°C



Size	C to C min (x YY)	Visibility
1	221	95
2	246	120
3	271	145
4	296	170
5	326	200
6	356	230
7	386	260
8	426	300
9	446	320
24	506	380
25	566	440
26	626	500
27	686	560
28	766	640
29	806	680
36	896	770
37	986	860
38	1106	980
39	1166	1040
47	1286	1160
48	1446	1320
49	1526	1400
57	1586	1460
58	1786	1660
59	1886	1760
68	2126	2000
69	2246	2120
79	2606	2480

ILLUMINATOR MODELS LL RG4, LL RG6, LL RG4 Ex, LL RG6 Ex

DESCRIPTION

The Illuminator family LL RG is used for bi-colour water gauge illumination.

Each port has 2 red and green LEDs pixels to provide a brilliant visibility.

To comply with ASME Section I, PG60, a ported gauge must provide a clear discrimination between steam and water; this requirement is mandatory, accordingly a ported gauge must have a working illuminator.

The led type illuminator, against the incandescent type lamps, has more brilliance and longer maintenance cycle.

Illuminator

- Housing in aluminium alloy
- Brilliant 2-pixel red and green LED lamps,
- Standard: for non-hazardous locations, IP65/67
- Optional: for hazardous locations, Ex ia/ib op is IIC Gb - Ex ia/ib op is IIIC Db
- Low power consumption – reduces energy cost
- LED lifespan absolutely longer than incandescent bulbs

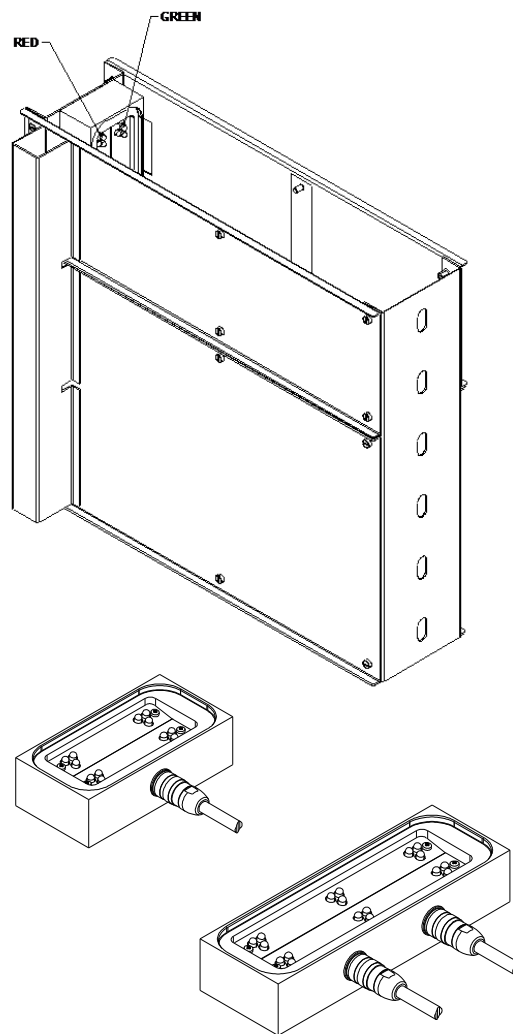
Illuminator Power Supply

- Watertight, weatherproof, and corrosion resistant enclosure
- Standard: for non-hazardous locations, IP66
- Optional: for hazardous locations, Ex d IIC Gb – Ex tb IIIC Db

Illuminator Housing

- Stainless steel ss316
- The panels in stainless steel maintain alignment and rigidity of the lighting system with the level gauge

Power Supply	.. 110-240 VAC
Power Consumption	0.48 W/port
Led Intensity Level..	25,000 mcd
LED Lifespan	Greater than 100,000 hours



The following data is required: type of liquid, operating & design temperature, operating & design pressure and the connections distance (C to C).