

OFFICINE OROBICHE

**MAGNETIC  
LEVEL ALARM  
T25 Series**

**OFFICINE OROBICHE**

## DESCRIPTION:

Magnetic switches are used to be fitted to the external sides of level indicators of the 2000 series and are equipped with a single exchange contact (SPDT). They provide a maximum and/or minimum level alarm signal on the level indicator.

They are connected to the indicator through stainless steel straps and can be adjusted to whatever position you desire.

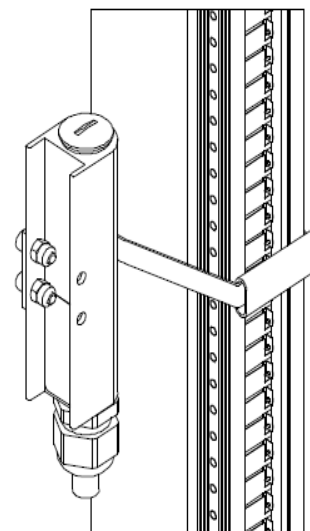
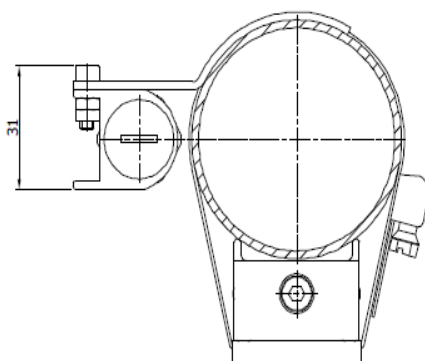
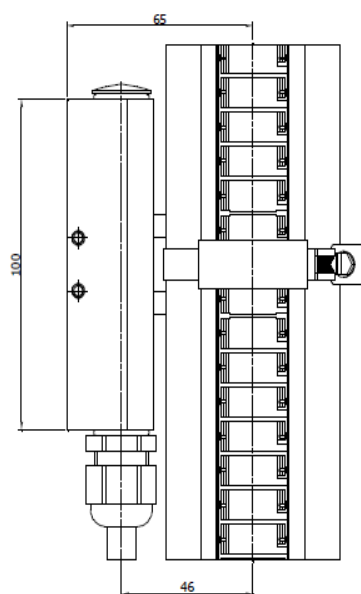
Magnetic switches are designed to provide simple and lasting service.

They are unfed bistable switches and are mainly composed of a housing with an incorporated reed contact, which is actuated by the magnetic field.

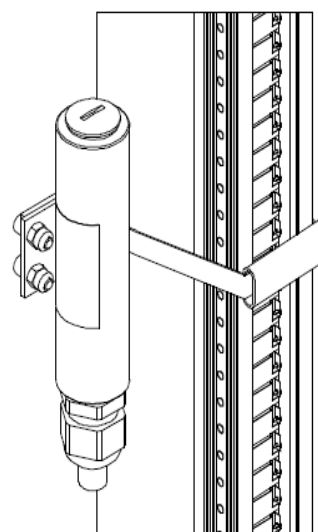
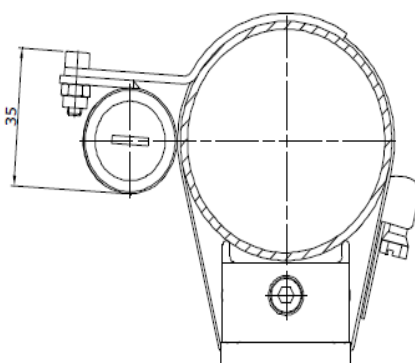
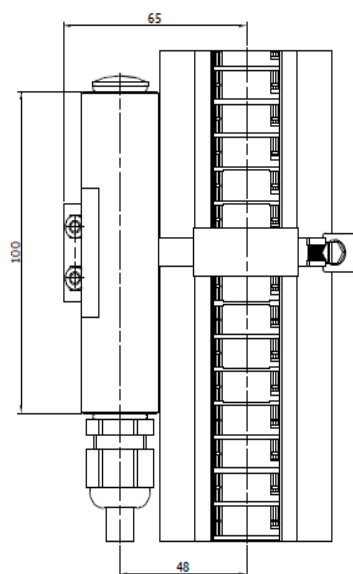
## MODELS:

<p>T25 T25 INOX</p>	<p>Sensor for ambient temperatures within the <math>-50^{\circ}\text{C}/+70^{\circ}\text{C}</math> Media temperature up to <math>250^{\circ}\text{C}</math> Protection class IP 66</p> <p>CONTACT RATING 230 VAC / 1A / 40VA – 200 VDC / 0,5A / 40W</p>
<p>T25 XI T25 XI INOX</p>	<p>Sensor for ambient temperatures within the <math>-50^{\circ}\text{C}/+70^{\circ}\text{C}</math> Media temperature up to <math>250^{\circ}\text{C}</math> Protection class IP 66 ATEX marking Intrinsically safe IECEX marking Intrinsically safe EAC Ex SIL 2</p> <p>CONTACT RATING <math>U_i = 28\text{V}</math> - <math>I_i = 100\text{ mA}</math> - <math>L_i = \text{negligible}</math> <math>C_i = \text{negligible}</math> - <math>P_i = 700\text{ mW}</math></p>
<p>T25 XD T25 XD INOX</p>	<p>Sensor for ambient temperatures within the <math>-40^{\circ}\text{C}/+70^{\circ}\text{C}</math> / <math>-50^{\circ}\text{C}/+70^{\circ}\text{C}</math> Media temperature up to <math>250^{\circ}\text{C}</math> Protection class IP 66 ATEX marking Explosion Proof IECEX marking Explosion Proof EAC Ex SIL 2</p> <p>CONTACT RATING 230 VAC / 1A / 40VA – 200 VDC / 0,5A / 40W</p>

**Available Cable lenght: 1m - 10m**



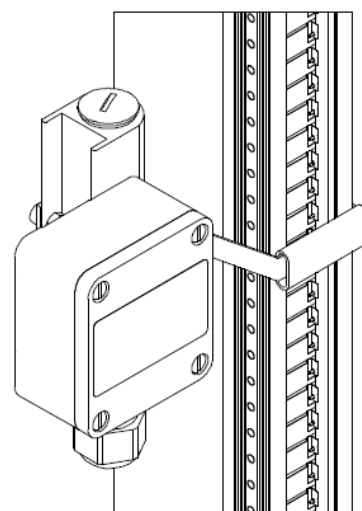
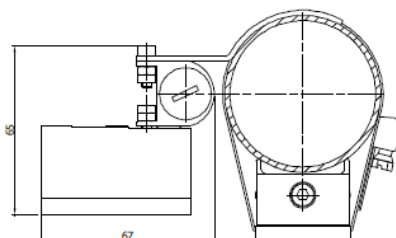
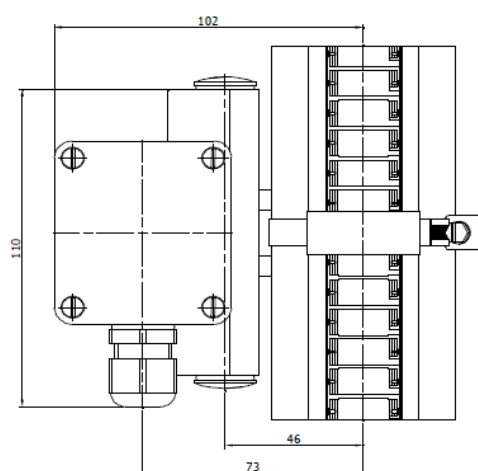
*T25 Standard Version with cable*



*T25 Inox AISI 316 Version with cable*

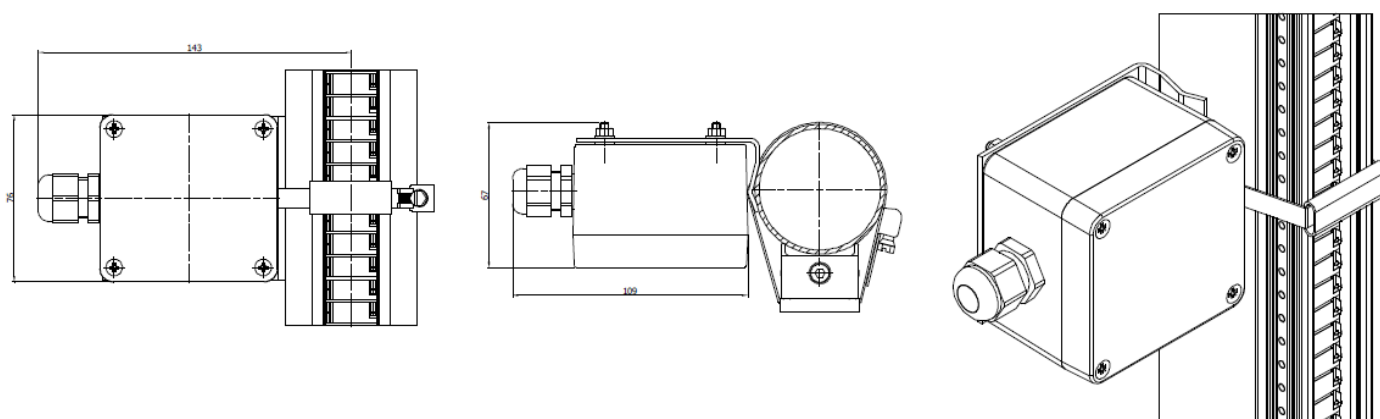
T25 WH	<p>Sensor for ambient temperatures within the <math>-50^{\circ}\text{C}/+70^{\circ}\text{C}</math>  Media temperature up to <math>250^{\circ}\text{C}</math>  Protection class IP 66</p> <p>CONTACT RATING  230 VAC / 1A / 40VA – 200 VDC / 0,5A / 40W</p>
T25 WHXI	<p>Sensor for ambient temperatures within the <math>-50^{\circ}\text{C}/+70^{\circ}\text{C}</math>  Media temperature up to <math>250^{\circ}\text{C}</math>  Protection class IP 66  ATEX marking Intrinsically safe  IECEX marking Intrinsically safe  EAC Ex  SIL 2</p> <p>CONTACT RATING  <math>U_i = 28\text{V}</math> - <math>I_i = 100\text{ mA}</math> - <math>P_i = \text{negligible}</math>  <math>C_i = \text{negligible}</math> - <math>P_i = 700\text{ mW}</math></p>

**Junction box with threaded connection ISO M 20x1,5**



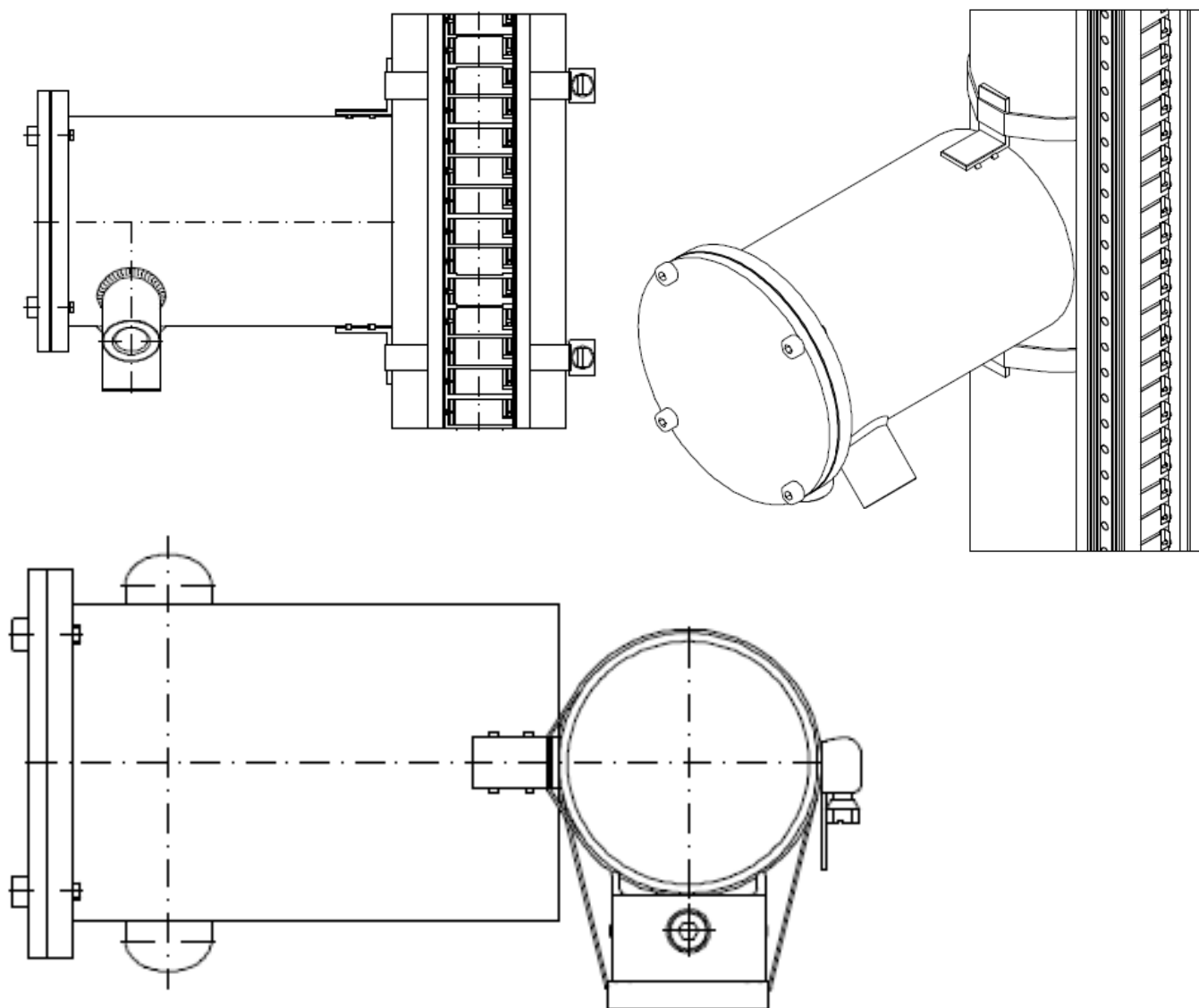
T25 HT	<p>High temperature sensor for ambient temperatures within the <math>-50^{\circ}\text{C}/+70^{\circ}\text{C}</math>  Media temperature up to <math>350^{\circ}\text{C}</math>  Protection class IP 66</p> <p>CONTACT RATING  230 VAC / 1A / 40VA – 200 VDC / 0,5A / 40W</p>
T25 HTXI	<p>High temperature sensor for ambient temperatures within the <math>-50^{\circ}\text{C}/+70^{\circ}\text{C}</math>  Media temperature up to <math>350^{\circ}\text{C}</math>  Protection class IP 66  ATEX marking Intrinsically safe  EAC Ex  SIL 1</p> <p>CONTACT RATING  <math>U_i = 28\text{V} - I_i = 100\text{ mA} - L_i = \text{negligible} - C_i = \text{negligible} - P_i = 700\text{ Mw}</math></p>
T25 NR	<p>Sensor for ambient temperatures within the <math>-50^{\circ}\text{C}/+70^{\circ}\text{C}</math>  Media temperature up to <math>250^{\circ}\text{C}</math>  Protection class IP 66  ATEX marking Intrinsically safe  IECEx marking Intrinsically safe</p> <p>NAMUR output</p>

**Junction box with threaded connection ISO M 20x1,5**



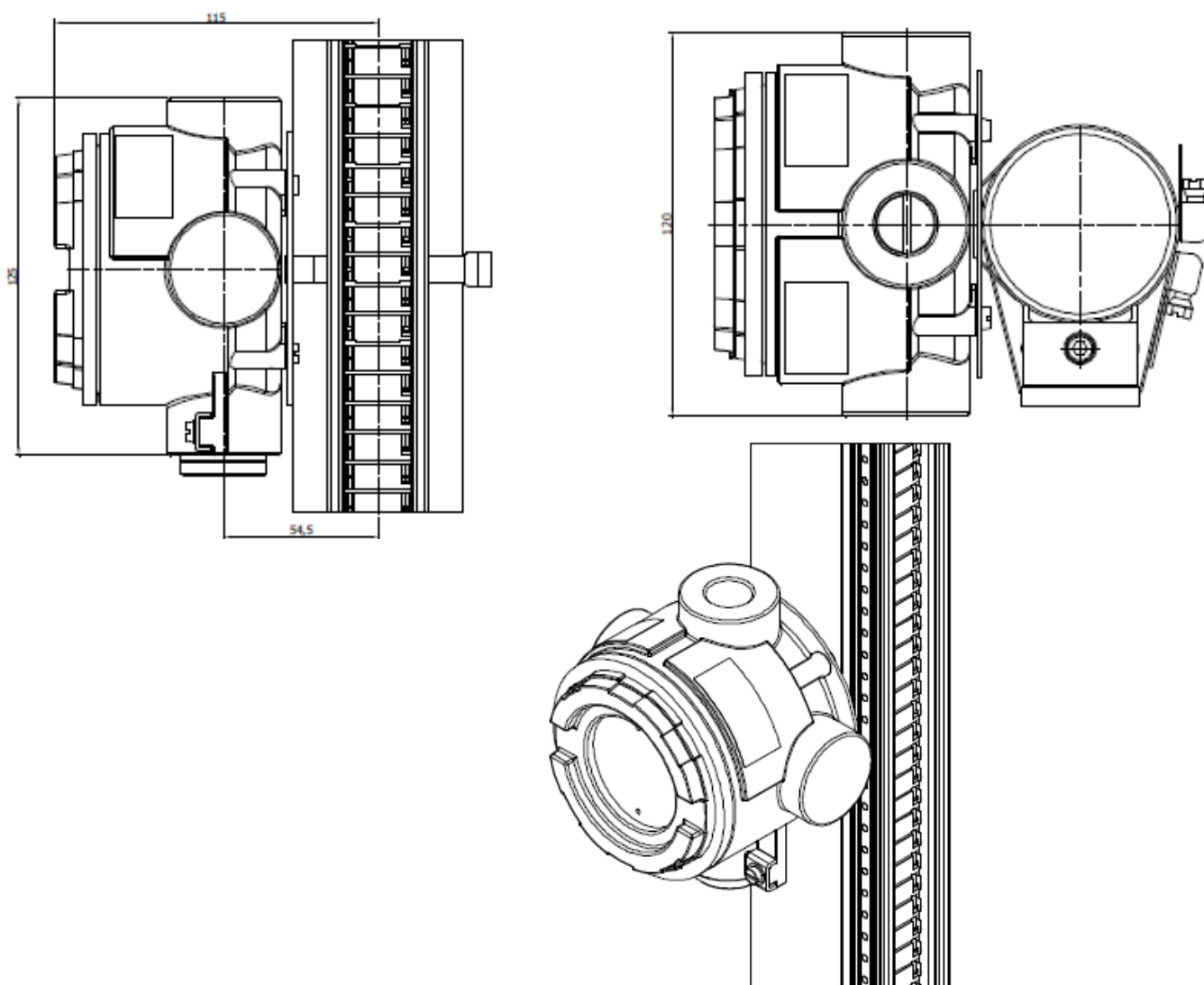
T25 PN	<p>Sensor for ambient temperatures within the <math>-15^{\circ}\text{C}/+60^{\circ}\text{C}</math>          Protection class IP 65          Pneumatic switch</p> <p><b>CONTACT RATING</b>          0 / 40 psi</p>
--------	---

**Housing with threaded connection 1/4" NPTF**



T25 XD2	<p>Sensor for ambient temperatures within the <math>-40^{\circ}\text{C}/+70^{\circ}\text{C}</math>  Media temperature up to <math>250^{\circ}\text{C}</math>  Protection class IP 66  ATEX marking Explosion Proof  IECEX marking Explosion proof  EAC Ex  SIL 2</p>
	<p><b>CONTACT RATING</b>  230 VAC / 1A / 40VA – 200 VDC / 0,5A / 40W</p>

**Junction box with threaded connection ISO M 20x1,5 or 1/2" NPT-F**





**OFFICINE OROBICHE S.r.l. - 24010 Ponteranica (Bergamo)**  
**Italy - Via Serena, 10- Tel. +39 035 4530211**  
**[www.officineorobiche.it](http://www.officineorobiche.it) - [info@officineorobiche.it](mailto:info@officineorobiche.it)**