

# Steripur 297 / KMA 290

## Manual Valve DN 4 - 15 mm (1/4" - 1/2")



Steripur 297



KMA 290

Butt weld ends  
MA 8  
Fold out page 21

### Specific Features

Type 297 Steripur

- Stainless steel bonnet and hand wheel
- Autoclavable

Type 290 KMA

- Stainless steel bonnet and plastic hand wheel
- Manual diaphragm Valve with plastic hand wheel is suitable for a limited number of cycles of autoclaving.

### General Features

Rising hand wheel

- Sealed bonnet with optical indicator
- Adjustable internal travel stop
- CDSA sealing concept, see page 32
- Flexible diaphragm suspension

### Optional

Type 297 Steripur

- Locking device

### Technical Data

Control function: Manually operated

Max. working pressure: 10 bar (150 psi)

Max. working temperature: 160°C (320°F) dependent on application

Diaphragm material: EPDM or PTFE

Body material: Forged 1.4435/ 316L ASME/BPE

Investment cast 1.4435/ 316L

Other Alloys

End connection: Butt weld ends see fold out page 21  
Clamps and flanges see page 22 and 23

Bonnets suitable for: Special ends  
Two-Way bodies  
Welded configurations  
T- bodies

Multiport bodies  
Tank bottom bodies

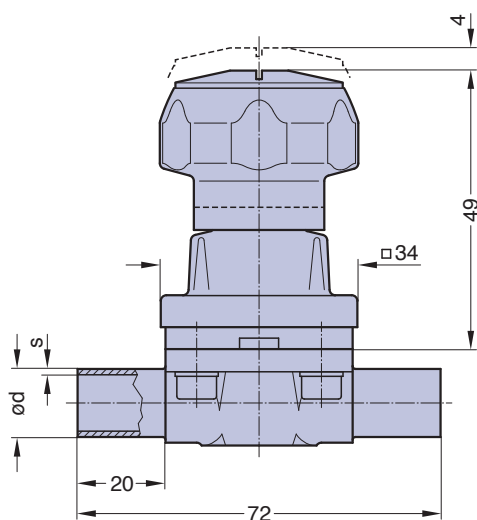
Flow rate: Kv in m³/h (Cv in GPM) see page 9

Diaphragm size: MA 8

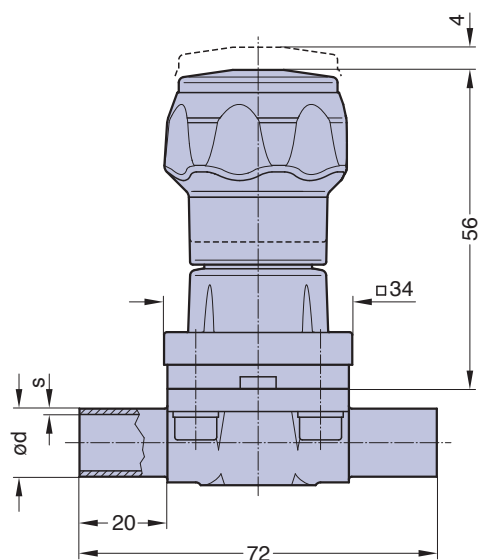
Weight: 290: ca. 0,2 kg

297: ca. 0,3 kg

Technical data also valid for multiport valve.



Steripur 297



KMA 290

Valve type overview see page 26 and 27.  
Ordering key see page 62 and 63.