

# Manual Valve

## Type 289 / 295 DN 12 - 15 (3/8" - 1/2")

**Type 289** hand wheel operated actuator in plastic is a compact designed valve ideal for using where space is at a premium.

The smooth contour finish of the plastic cover eliminates accumulation of dirt and is corrosion resistant.

**Type 295** hand wheel operated actuator with stainless steel bonnet is the same compact design as type 289 but with a stainless steel bonnet which allows this valve to be used for higher temperature, depending on the diaphragm material to be used.

### $K_v$ 100 flow coefficient

The  $K_v$ 100 flow coefficient is the Q flow rate of cubic meter per hour of water at a temperature of 20°C that will generate  $\Delta p = 1$  bar pressure drop at a certain valve position.

The  $K_v$ 100 values shown in the table are calculated with the valve completely open.

### Features

- Process media can be neutral or aggressive liquid, and gaseous, dependent upon material selection of body and diaphragm
- Flow can be in either direction
- Insensitive to dirty or contaminated media
- Excellent flow characteristic
- Bubble tight sealing
- Installation can be in any position
- Eliminates water hammer
- Complete with position indicator
- Compact construction
- Maintenance free and non corrosive actuator
- Adjustable internal travel stop

### Technical specifications

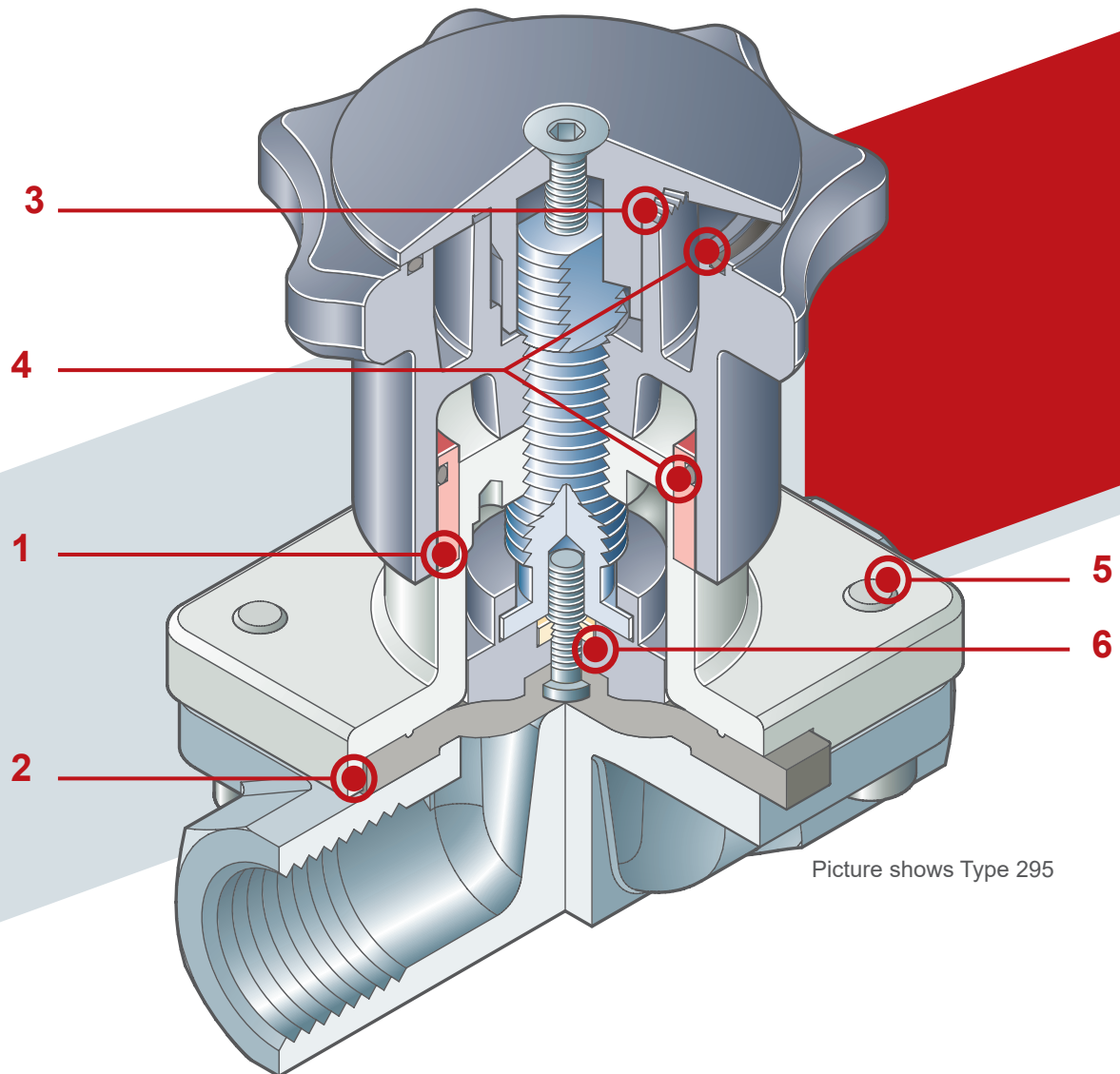
<b>Design</b>	Diaphragm Valve Type 295, Stainless steel bonnet and plastic handwheel Type 289, Plastic bonnet and handwheel
<b>Size range</b>	DN 12 - 15
<b>Diaphragm size see page 11</b>	MA 10
<b>Body material</b>	Investment cast 1.4435/316L
<b>End connection standards see page 8-9</b>	<b>Threaded socket:</b> DIN ISO 228
<b>Diaphragm material</b>	EPDM, PTFE, NBR, FPM
<b>Actuator material</b>	Type 295, Bonnet stainless steel, hand wheel PA-GR, rising handwheel Type 289, PA-GR, rising handwheel
<b>Max. working pressure</b>	10 bar (150 PSI), Type 295 6 bar (87 PSI), Type 289
<b>Temperature range</b>	-10 °C to +150 °C, depending on diaphragm and body material
<b>Control functions</b>	Manual control

**Note:** Possible actuator and valve body combinations see page 7.  
Ordering key see page 60.

DN	12	15
$K_v$ m <sup>3</sup> /h	2,8	4,2
$C_v$ gpm	3,3	4,9

# Manual Valve

## Type 289 / 295 DN 12 - 15 (3/8" - 1/2")



Picture shows Type 295

**1** Optical position indicator  
supplied as standard

**3** Adjustable internal travel stop to  
prevent excessive compression of  
the diaphragm

**5** Bottom entry **stainless steel**  
**bolting**

**2** Encapsulated diaphragm to  
prevent the elastomer of the  
diaphragm from extruding beyond  
the body bonnet flange

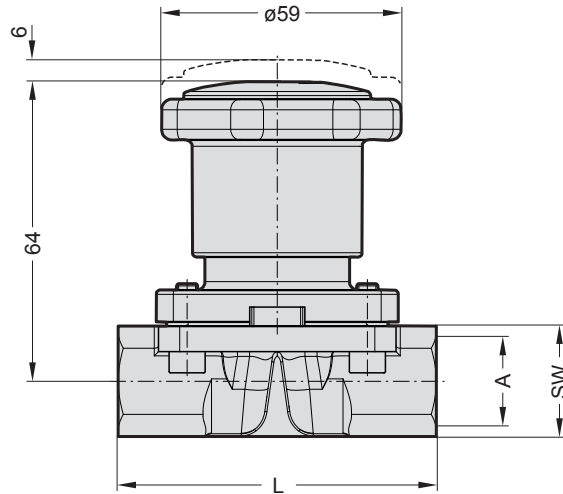
**4** Sealing bonnet assembly

**6** Flexible diaphragm suspension to  
eliminate point loading at the center  
of the diaphragm

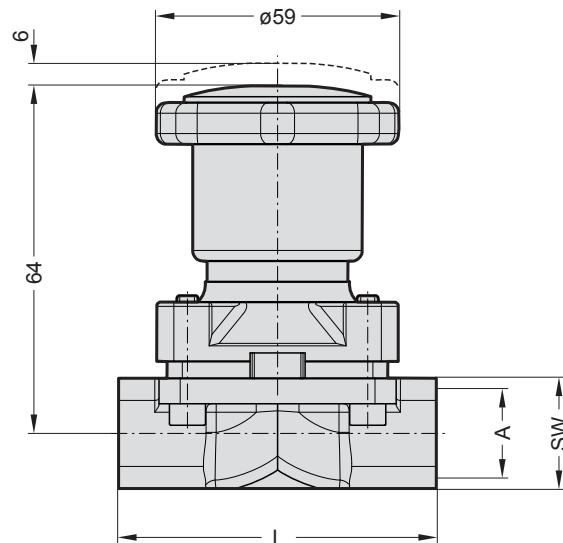
# Manual Valve

## Type 289 / 295 DN 12 - 15 (3/8" - 1/2")

### Type 295



### Type 289



### Dimensions (mm)

DN	MA	A	L	SW	Weight kg 295 / 289
12	10	G3/8"	56	22	0,52 / 0,38
15	10	G1/2"	75	27	0,58 / 0,44