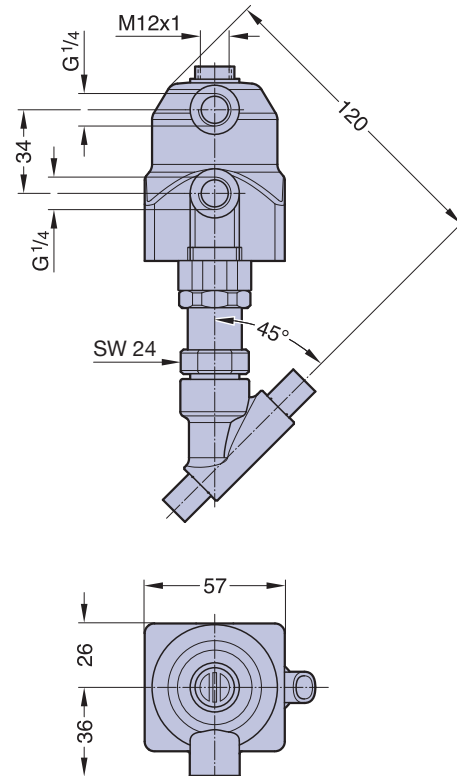


Type 584, Actuator 43

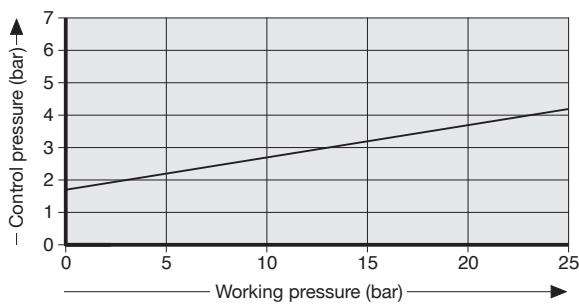


Weight ca. 0,7 kg

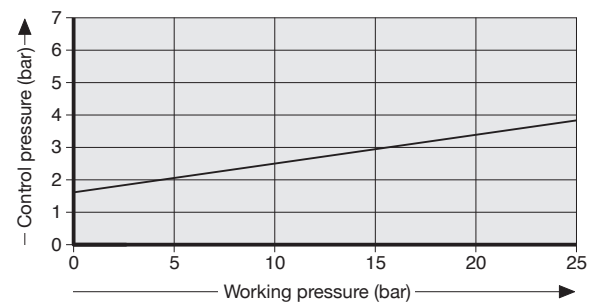
Valve body types see page 104 - 105

Control equipment and accessories see page 108 - 115

Actuator 43 (NO), flow below the seat



Actuator 43 (DA), flow below the seat



Working pressure normally closed (Cf. 1), flow below the seat as well as Working terms, see table page 96.
All pressures are gauge pressures.