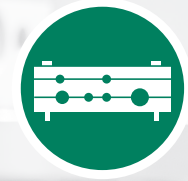


Block Clamps



Special Clamps



Light Series Clamps



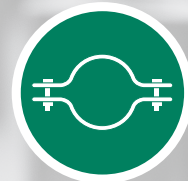
Saddle Clamps



U-Bolt Clamps

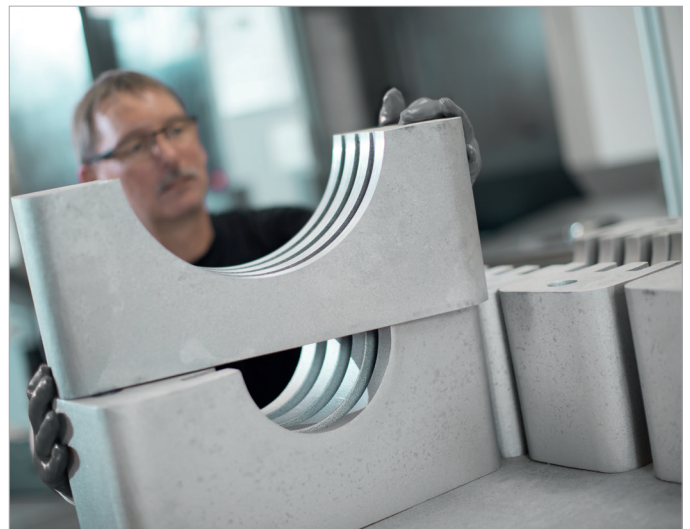
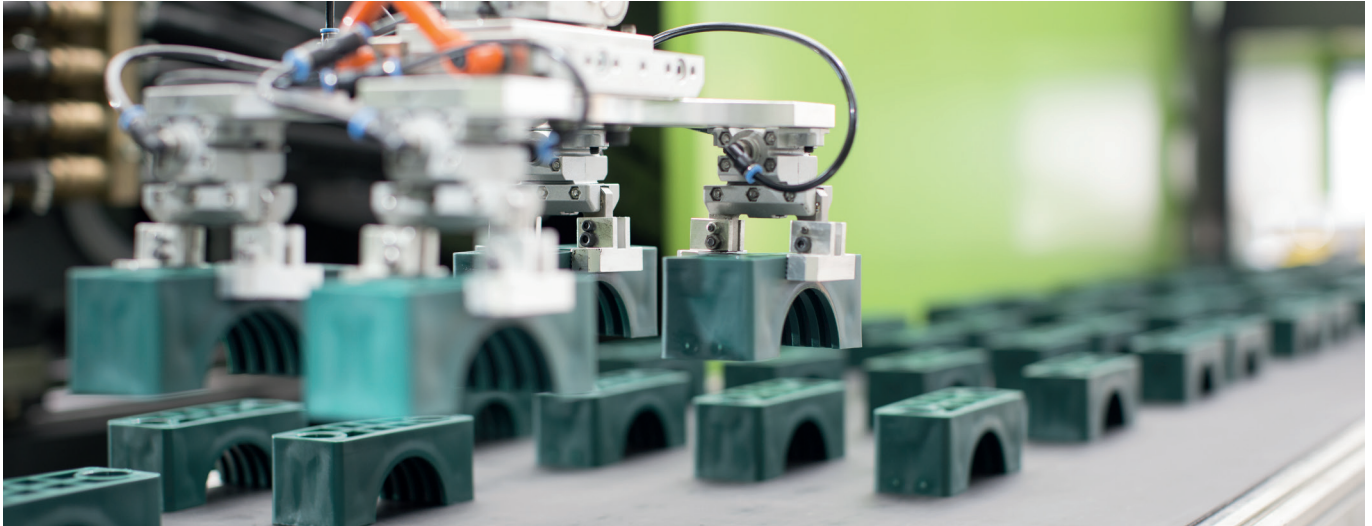


Metal Clamps



Construction Series





STAUFF Clamps

For more than 50 years, STAUFF Clamps symbolise quick and easy as well as secure installation of pipes, tubes, hoses, cables and other flexible and rigid components with outside diameters up to 1016 mm / 40.00 inch.

Their vibration and noise reducing features are appreciated as being an important contribution to environmental protection and occupational health and safety.

The processing of fire-proof clamp body materials, tested and approved according to several international fire-protection standards (such as BS 6853, EN 45545-2, UL 94) is only one of the many particular strengths of STAUFF.

STAUFF guarantees prompt service, even for customised solutions according to customer's specifications or based on our in-house development.

For selected types and series, independent certificates and approvals can be provided:

- American Bureau of Shipping
- Bureau Veritas
- Department of the Navy, New York
- Germanischer Lloyd
- Lloyd's Register of Shipping
- Registro Italiano Navale
- Russian Maritime Register of Shipping
- Technischer Überwachungsverein
- United States Coast Guard

For the finishing of the range of pipe, tube, hose and cable clamps as well as metal hardware in carbon steel, STAUFF relies on the STAUFF Zinc/Nickel surface coating which has proven successful for many years. It provides reliable surface protection – even after transport, handling and assembly – and meets all current legal requirements.

Versions in stainless steel V2A and V4A are generally available from stock. Alternative materials and surfaces are available on request.





STAUFF Zinc/Nickel Coating



- Layers**
- Sealing
 - Passivation
 - Zinc/Nickel
 - Steel

With at least 1200 hours resistance against red rust, the STAUFF Zinc/Nickel surface coating offers excellent surface protection – even after transport, handling and assembly. This was confirmed by testing in the salt-spray chamber according to DIN EN ISO 9227.

Users across all industries and applications benefit from sophisticated technology, which has been developed for and used by the very demanding automotive industry for many years now and that is already the proven standard for a large proportion of STAUFF components since 2007.

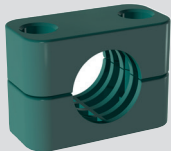
- At least 1200 hours resistance to red rust / base metal corrosion under practical conditions in the salt-spray chamber according to DIN EN ISO 9227
- White rust occurs only by way of a slight grey haze
- Surpassing the requirements of the corrosion protection class K5 as defined by the VDMA, the German Engineering Association (360 hours resistance to white rust / 720 hours resistance to red rust)
- Free of hexavalent chrome Cr(VI)
- ELV compliant according to 2000/53/EC (End of Life Vehicles Directive)
- REACH compliant according to 1907/2006/EC (Registration, Evaluation, Authorisation and Restriction of Chemicals)
- RoHS compliant according to 2002/95/EC (Restrictions of the Use of Hazardous Substances)
- Appealing colour scheme with a bright semi-gloss surface finish – comparable to Stainless Steel
- Significantly reduced tendency to corrosion by contact with other metals (such as Aluminium and Stainless Steel)
- Improved abrasion resistance due to the ductility / plastic deformability of the coating
- Little to no risk of triggering allergies – nickel release is down to only a fraction of the statutory limits relating to objects which come into direct and prolonged contact with the skin (independent results of the reference test method according to DIN EN 1811 are available on request)
- Good paint adhesion properties
- Resistance against all commonly used hydraulic media



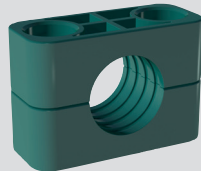


Block Clamps according to DIN 3015 or similar

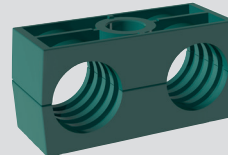
Series



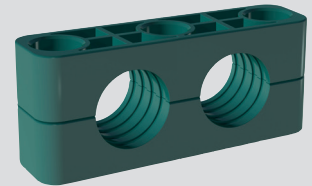
Standard Series
according to DIN 3015 (part 1)
for outside diameters up to 102 mm



Heavy Series
according to DIN 3015 (part 2)
for outside diameters up to 450 mm

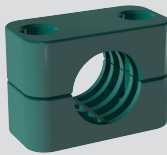


Twin Series
according to DIN 3015 (part 3)
for outside diameters up to 42 mm

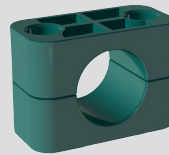


Heavy Twin Series
for outside diameters up to 42 mm

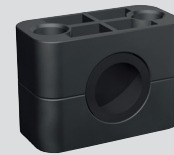
Clamp Body Designs (Selection)



Profiled inside surface with tension clearance
for the installation of pipes and tubes

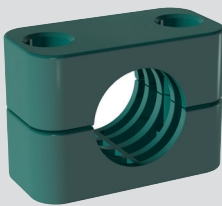


Smooth inside surface without tension clearance
for the installation of hoses and cables

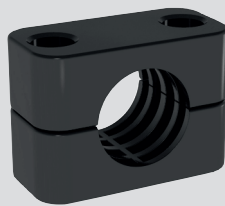


With elastomer insert
for the noise and vibration reducing
installation of pipes and tubes and the
extra-gentle installation of hoses and cables

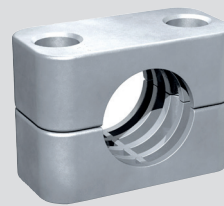
Clamp Body Materials (Selection)



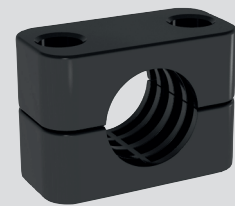
Polypropylene (PP)



Polyamide (PA)

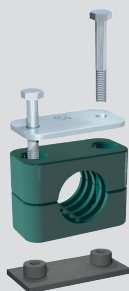


Aluminium (AL)



Thermoplastic Elastomer (SA)

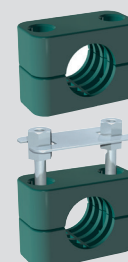
Installation Types (Selection)



Installation with base / weld plate



Installation with mounting rail



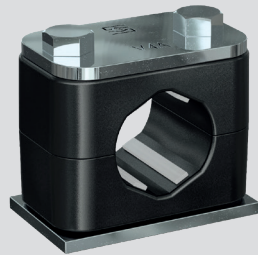
Multi-level / stacking installation





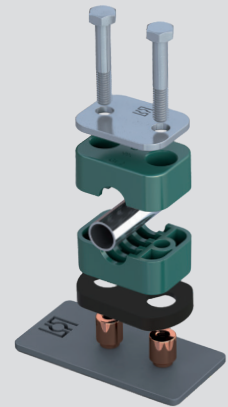
STAUFF ACT Anti-Corrosion Technology

Efficient prevention of crevice corrosion under pipe clamps on stainless steel pipework
 Middle- and long-term cost savings due to extended service and maintenance intervals
 Stainless steel mounting hardware with enhanced corrosion resistance



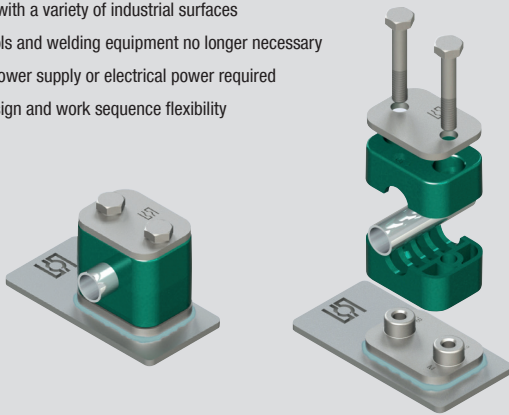
STAUFF SWG Stud-Welding System

Significant time and cost savings by a quicker welding process
 Reduced rework on welding locations
 Short welding time and low thermal stress
 High strength due to a welded joint over the whole surface



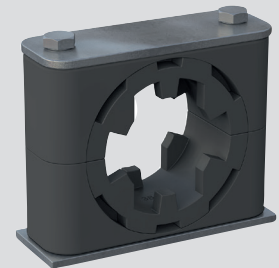
STAUFF Bond Adhesive Bonded Fastening

Reduce cycle time and labor cost during installation
 Can be used with a variety of industrial surfaces
 Expensive tools and welding equipment no longer necessary
 No external power supply or electrical power required
 Maximize design and work sequence flexibility



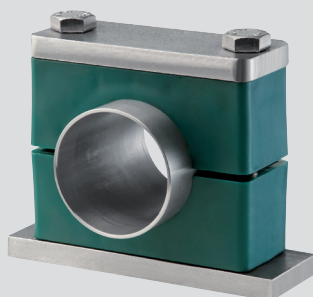
Noise and Vibration Reducing STAUFF NRC Clamps

Reducing the overall level of noise emissions
 Contributing to improved occupational health and safety
 Maximising flexibility with the design, layout and positioning of noise-intensive pipes and tubes



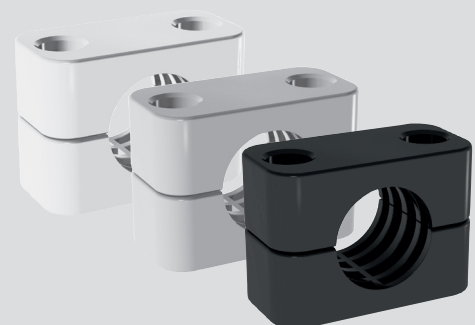
Aluminium Mounting Hardware

Potential weight savings of up to 66% compared to steel and stainless steel with an exceptional strength
 Excellent inherent resistance to corrosion



Preventive Fire Protection

Flame-retardant special materials for clamp bodies according to international fire-protection standards (e.g. BS 6853, EN 45545-2, UL 94)

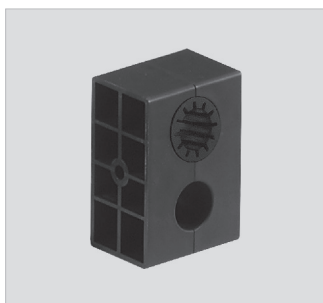
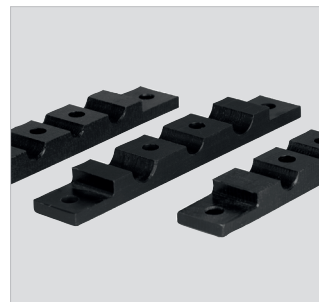
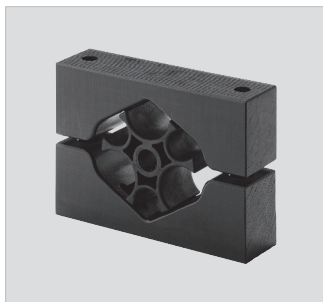




Special Clamps

Custom-designed clamping systems for pipes, tubes, hoses, cables and other components according to customer's specifications or based on STAUFF developments

- Machined version made of thermoplastics, metals, non-ferrous metals etc.
- Injection moulded versions made of thermoplastics (Polypropylene, Polyamide etc.)
- Custom-designed mounting hardware

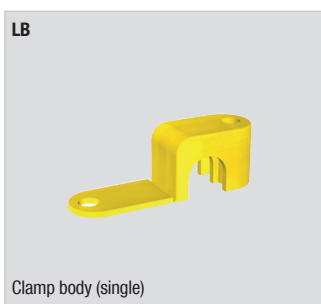
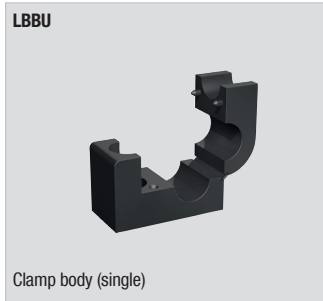


Light Series

Fastening of lines with outside diameters up to 32 mm / 1-1/4 in

Applications

- Pneumatics and instrumentation
- Automotive industry
- Mechanical engineering industry
- Measuring and control systems
- Machine tool industry





Saddle Clamps

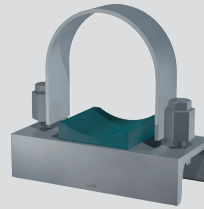
Fastening of lines on hydraulic cylinders and other round or oval structures (using steel straps or worm drive hose clamps)

ZR



Saddle / piggyback clamp

FB / RUK



Flat steel U-bolt clamp with pipe saddle (short) and U-profile

RB / RUK

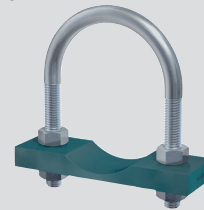


Round steel U-bolt clamp with pipe saddle (short)

Custom-designed saddle / piggyback clamps



RB / RUL



Round steel U-bolt clamp with pipe saddle (long)

RBD

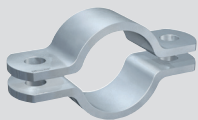


Round steel U-bolt clamp (DIN 3570, type A) without pipe saddle



Metal Clamps

DIN 3567-A



Metal pipe clamp with tension clearance (two-bolt design)

DIN 3567-B



Metal pipe clamp with tension clearance (three-bolt design)

KS



Construction Series (single)

DKS



Construction Series (twin)

DIN 1592 / DIN 1593



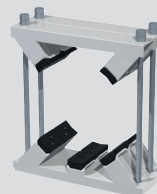
Heavy saddle with tension clearance

DIN 1596 / DIN 1597



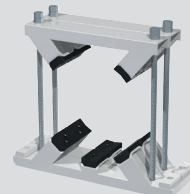
Light saddle with tension clearance

KSV



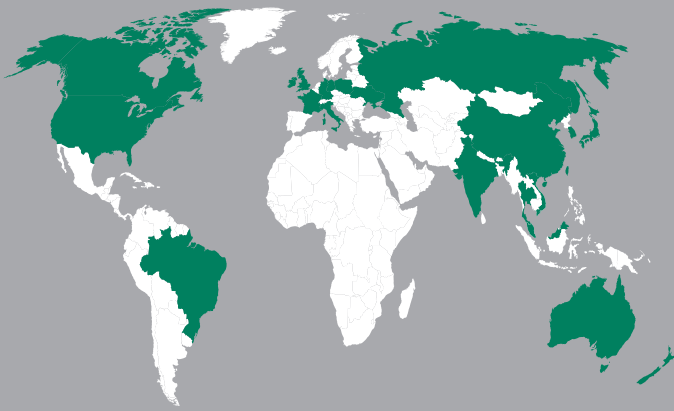
Construction Series (single) for anchor bolt fastening

DKSV



Construction Series (twin) for anchor bolt fastening





GERMANY

Walter Stauffenberg GmbH & Co. KG
Im Ehrenfeld 4
58791 Werdohl
Tel.: +49 2392 91 60
Fax: +49 2392 91 61 03
E-Mail: sales@stauff.com

STAUFF products and services are globally available through wholly-owned subsidiaries and a tight network of authorised distributors and representatives in all major industrial regions of the world.

You can find detailed contact information at
www.stauff.com

AUSTRALIA

STAUFF Corporation Pty Ltd
Tel.: +61 2 4271 9000
sales@stauff.com.au

BRAZIL

STAUFF Brasil Ltda.
Tel.: +55 11 47 72 72 00
stauff@stauffbrasil.com

CHINA

STAUFF China
Tel.: +86 21 68 18 70 00
info@stauff.com.cn

FRANCE

STAUFF S.A.S.
Tel.: +33 2 54 50 55 50
direction@stauffsa.com

INDIA

STAUFF India Pvt. Ltd.
Tel.: +91 20 67 31 4900
sales@stauffindia.com

IRELAND

STAUFF Ireland
Tel.: +44 28 92 60 69 00
sales@stauffireland.com

ITALY

STAUFF Italia S.r.l.
Tel.: +39 031 65 84 94
sales@stauff.it

CANADA

STAUFF Canada Ltd.
Tel.: +1 416 282 46 08
sales@stauffcanada.com

KOREA

STAUFF Korea Ltd.
Tel.: +82 51 266 66 66
info@stauff.co.kr

MALAYSIA

STAUFF South East Asia Sdn Bhd
Tel.: +60 3 5637 7888
sales@stauff.com.my

NEW ZEALAND

STAUFF Corporation (NZ) Ltd.
Tel.: +64 9 912 1530
sales@stauff.co.nz

POLAND

STAUFF Polska Sp. z o.o.
Tel.: +48 58 660 11 60
sales@stauff.pl

RUSSIAN FEDERATION

STAUFF LLC
Tel.: +7 495 276 16 50
sales@stauff.ru

THAILAND

STAUFF (Thailand) Co., Ltd.
Tel.: +66 2 721 73 23
sales@stauff.co.th

UNITED STATES

STAUFF Corporation
Tel.: +1 201 444 78 00
sales@stauffusa.com

UNITED KINGDOM

STAUFF UK Ltd.
Tel.: +44 114 251 85 18
sales@stauff.co.uk

VIETNAM

STAUFF Vietnam Ltd.
Tel.: +84 8 3948 1041
sales@stauff.com.vn