

## Load base (rubber foot) with ball-shaped head for optimal load input

for nominal loads from 100 kg up to 10.000 kg



### Description

Load cell supports are designed to prevent unwanted forces from affecting load cell performance.

The type AZK01X720 is a self aligning rubber foot, combining excellent load introduction with low profile design.

It is the technical and economical excellent solution for i.e. single point scales.

Especially designed for: F3270, F3271, F3272.

### Features

- Load input with pocket hole
- Low installation height
- Ease of assembly
- Specially for platform weighing machines
- Approved for weighing machines that are appropriate for verification
- No additional guiders or limit stops required
- Height-adjustable by means of discs
- Flat version available

### Accessories

- Fixing plate

### Measuring ranges

- for nominal loads from 100 kg ... 10.000 kg

### Applications

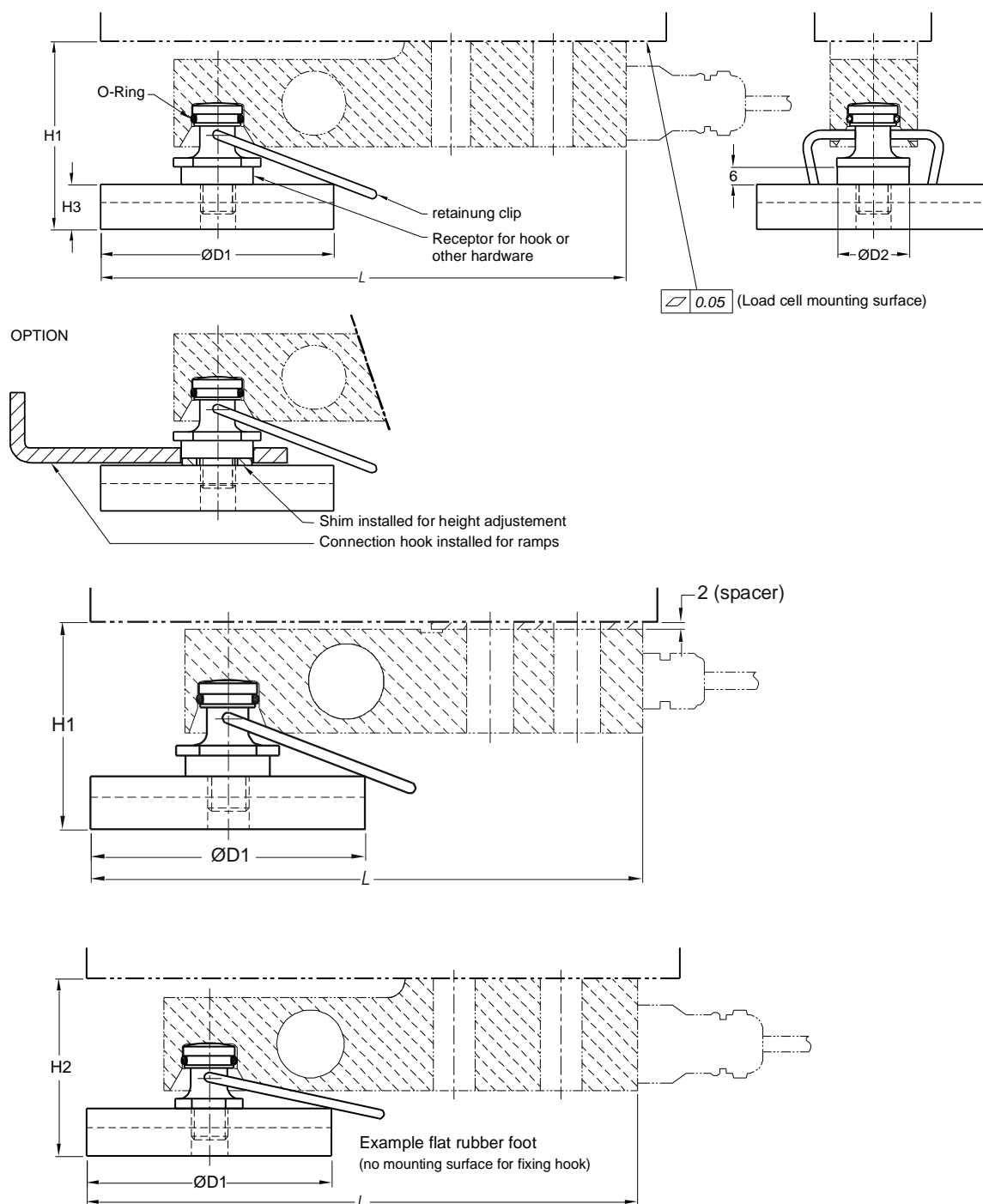
- Can be used with force transducers:  
F3270,  
F3271,  
F3272

### Material

- Stainless steel

**Model: AZK01X720**

## Dimensions



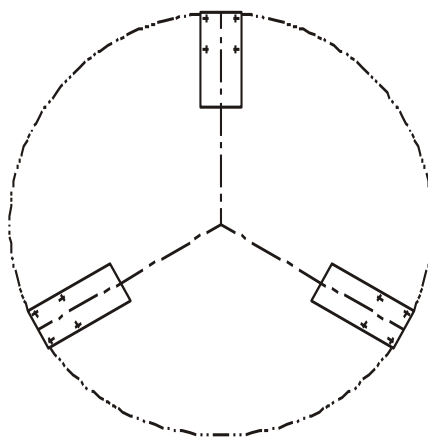
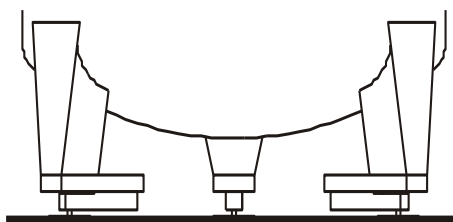
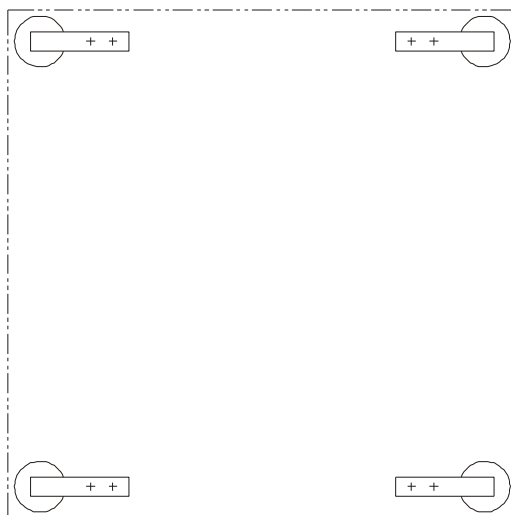
Load cell type	Capacity in kg	L	H1	H2	H3	D1	D2
F3271-5 kN/10 kN/20 kN	510/1020/2039	180	65	58	16	80	24.5
F3271-50 kN	5099	219	90	--	18	100	34.5
F3271-100 kN**	10179	278	109	--	26	125	44
F3272-500 lb/1 klb	227/454	164	60	53	16	80	24.5
F3272-2.5 klb/5 klb	1134/2268	164	62*	55*	16	80	24.5
F3270-200 lb/500 lb	91/227	154	61*	54*	16	60	24.5
F3270-1 klb/2.5 klb/5 klb	454/1134/2268	164	61*	54*	16	80	24.5

\* including distance plate

\*\* Special clip available

All dimensions in mm. Dimensions and specifications are subject to change without prior notice.

## Examples



Subject to technical changes

AE 935 c

p. 3 / 3