

Height-adjustable load base (rubber foot) with ball-shaped head

for capacities from 20 kg up to 2500 kg



Description

tecsis load cell supports are designed to prevent unwanted forces from affecting load cell performance.

The Type AZK01X721 is a height adjustable, self aligning rubber foot; combining excellent load introduction with low profile design. Height adjustable by rotation of the foot.

Features

- Load input with pocket hole
- Low installation height
- Ease of assembly
- Specially for platform weighing machines
- Approved for weighing machines that are appropriate for verification
- No additional guiders or limit stops required
- Height adjustable by turning the rubber element
- Accessories: Fixing plate

Measuring ranges

- for nominal loads from 20 kg ... 2500 kg

Applications

- Can be used with force transducers of the models F3270, F3271 and F3272

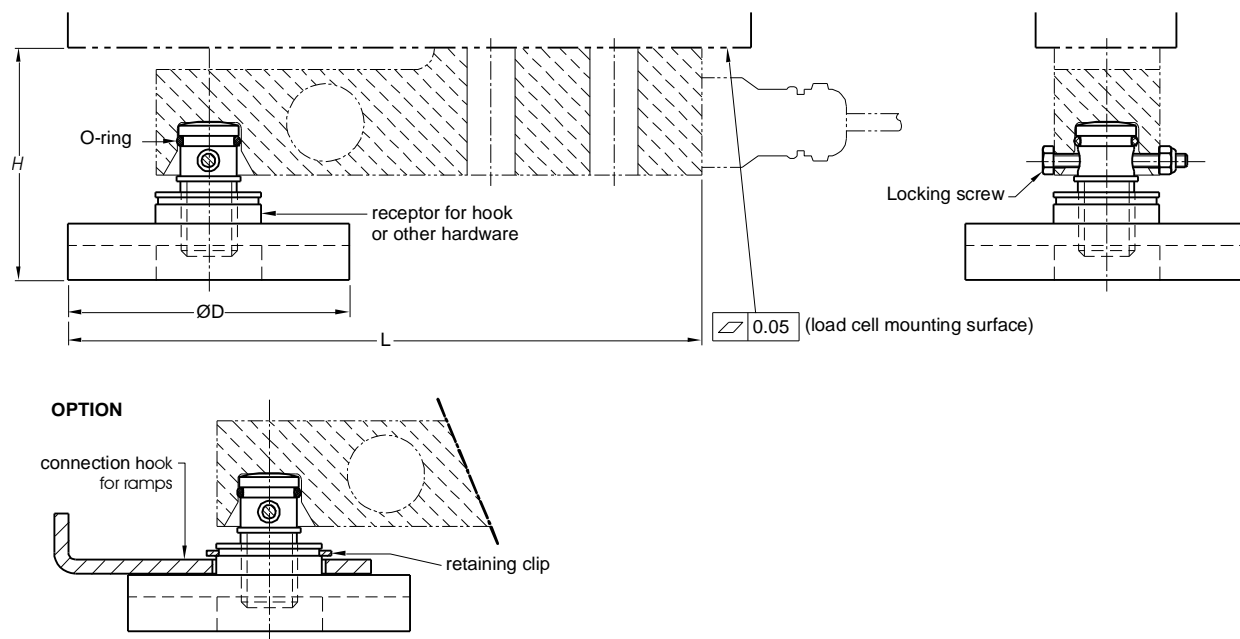
Material

- Stainless steel

Model: AZK01X721

Dimension

with F3271 and F3272

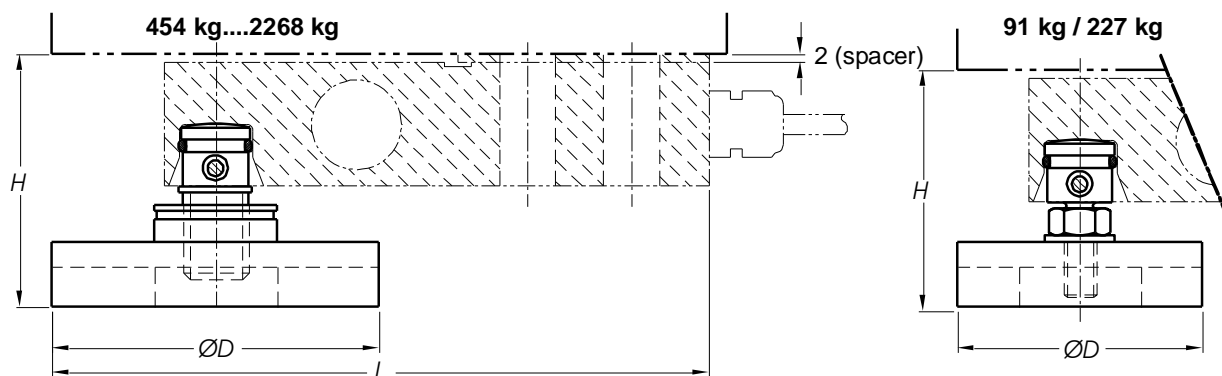


Load cell	Nominal load (kg)	L	H	D
F3271-5 kN/10 kN/20 kN	510/1020/2039	180	63...71	80
F3272-500 lb/1 klb	227/454	164	58...66	80
F3272-2.5 klb/5 klb	1134/2268	164	60...68*	80
F3270-200 lb/500 lb	91/227	154	57...63*	60
F3270-1 klb/2.5 klb/5 klb	454/1134/2268	164	59...67*	80

* Inclusive distance plate.

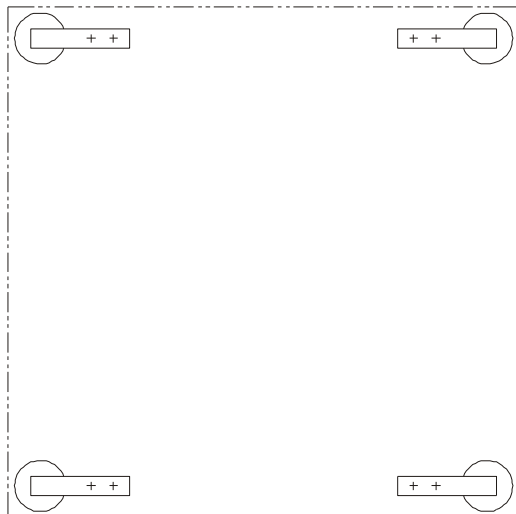
All dimensions in mm. Dimensions and specifications are subject to change without notice.
CAD files for customer's own application drawings are available on request.

with F3270

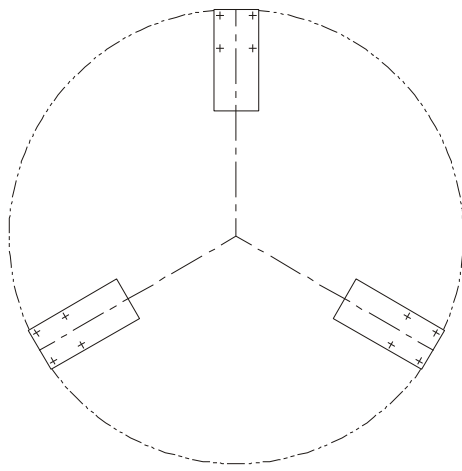
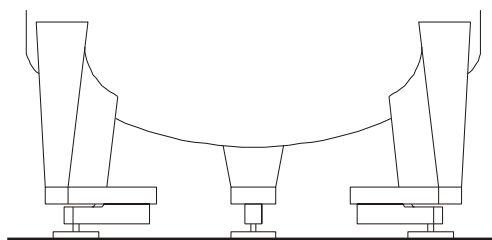


Examples

Platform scale with 4 load cells



Tank weighing system
with 3 load cells



Subject of technical changes