

Load base (rubber foot) with mounting flange and ball-shaped head



Description

The mounting parts for load cells and force transducers are so designed that the application of the force to the load cell or force transducer is done in an optimum way. The load foot with flange AZK01X722 is an excellent technical and economic solution and combines the advantages of the known load foot AZK01X720 with an additional assembly flange and is therefore especially suitable for container balances, floor units and mobile balances.

If necessary the height can be adjusted by inserting shims.

Features

- Load input with pocket hole
- For capacities from 90 kg up to 10,000 kg
- Low installation height
- Ease of assembly
- Height adjustable by turning the rubber element
- Approved for weighing machines that are appropriate for verification

Accessories

- Sealing plate

Applications

- Suitable for container weighing machines, ground installation and movable weighing machines
- Can be used with force transducers of the models F3270, F3271 and F3272

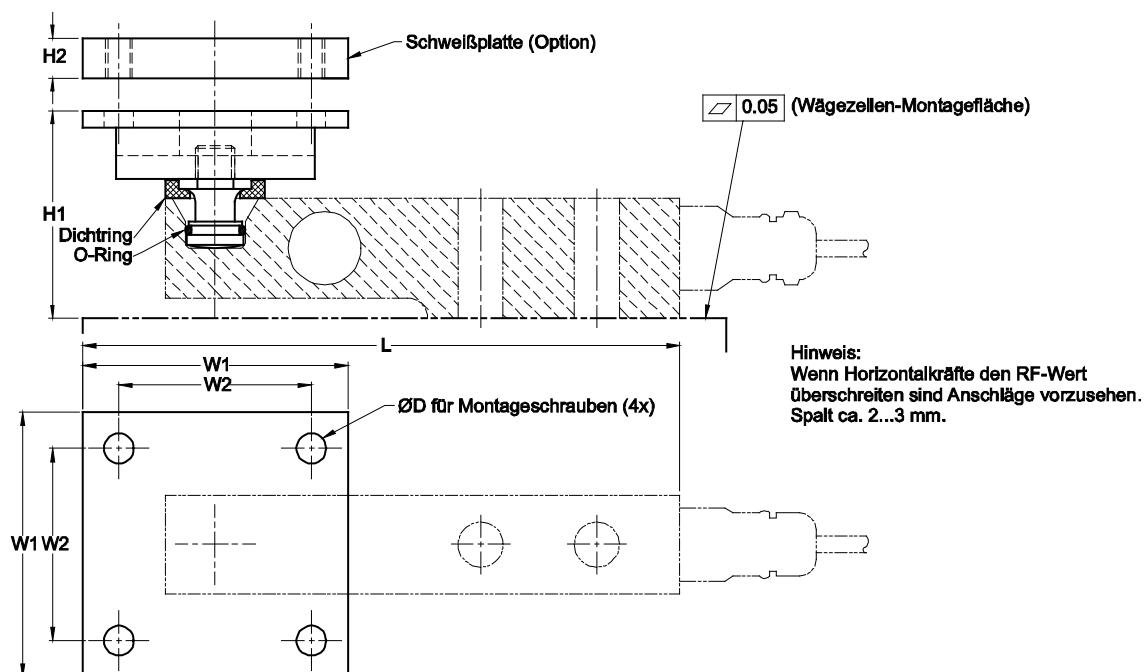
Material

- Stainless steel

Model: AZK01X722

Dimension

with F3271 and F3272



Force transducer	Nominal load (kg)	Dimensions (mm)							
		L	H1	H2	W1	W2	D	S _{max} **	RF***
F3271 - 5 kN/10 kN/20 kN	510/1020/2039	180	63	12	80	58	M8	5 mm	1600 N
F3271 - 50 kN	5099	219	78	12	100	76	M10	5 mm	5000 N
F3272 - 500 lb	227	154	54	6	60	44	M6	6 mm	700 N
F3271 - 100 kN	10197	275	108	20	120	90	M12	5 mm	7000 N
F3272 - 1 klb/2.5 klb/5 klb	454/1134/2268	164	60*	12	80	58	M8	5 mm	1600 N
F3270 - 200 lb/500 lb	91/227	154	55*	6	60	44	M6	6 mm	700 N
F3270 -1 klb/2.5 klb/5 klb	454/1134/2268	164	59*	12	80	58	M8	5 mm	1600 N

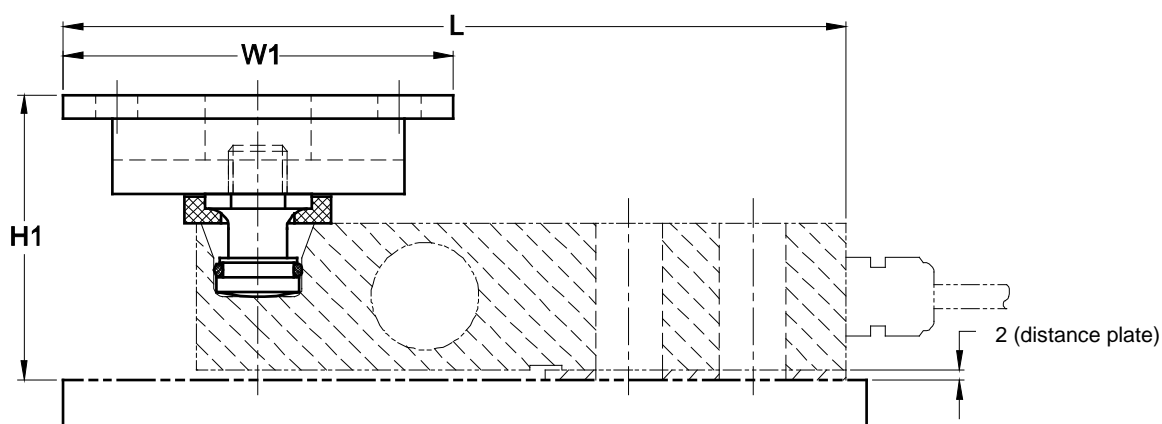
** S_m

*Inclusive distance plate

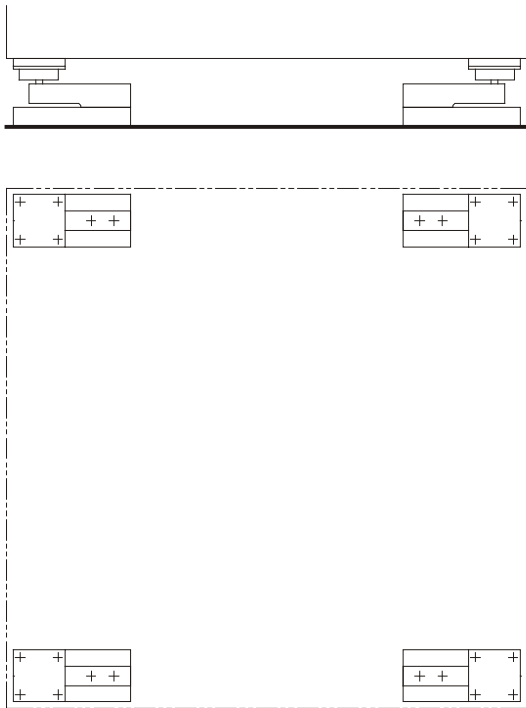
**S_{max}: Maximum of tolerable horizontal load input offset

*** Reset force at S_{max}

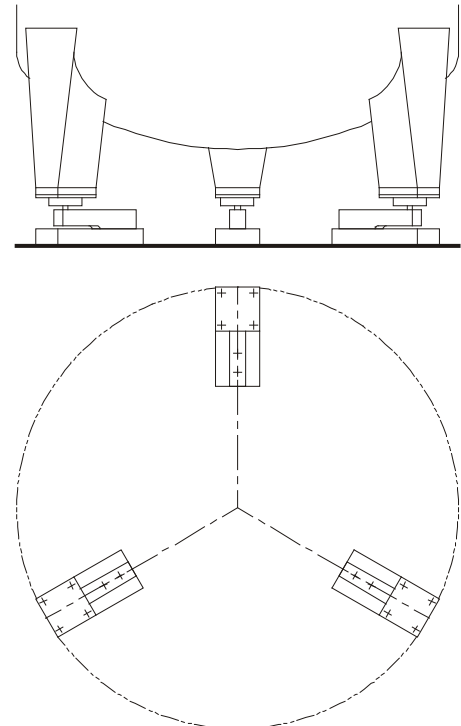
Details with F3270



Examples



Platform scale with 4 load cells



Tank weighing system with 3 load cells