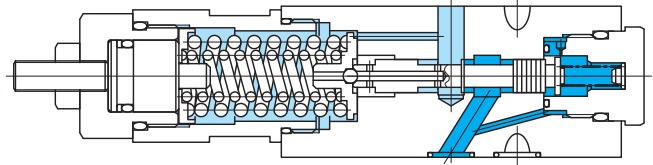
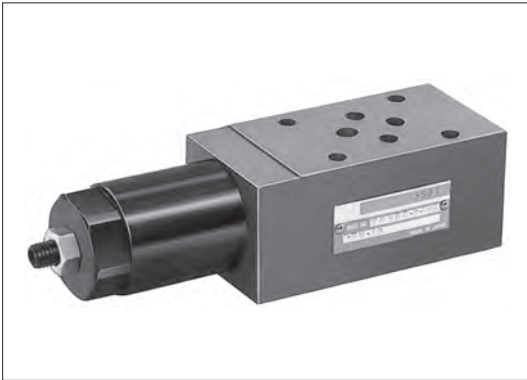
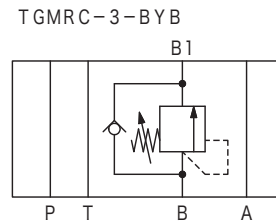
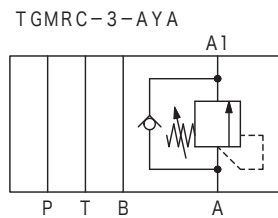


Pressure counterbalance valves TGMRC-3



Functional Symbols



Model Code

(F3)-TGMRC-3-AYA-BW-11

1 2 3 4 5 6 7 8

1 Hydraulic fluid

Omit: mineral oil based fluid, water-glycol based fluid
F3: phosphate ester

2 Counterbalance valve

3 Mounting dimensions

3: ISO 4401-03

4 Control port

A: A port

B: B port

5 Pilot line

A: A line

B: B line

6 Pressure adjustment range

Refer to "Specifications".

7 Adjuster

W: hex socket adjustment screw

8 Design no.

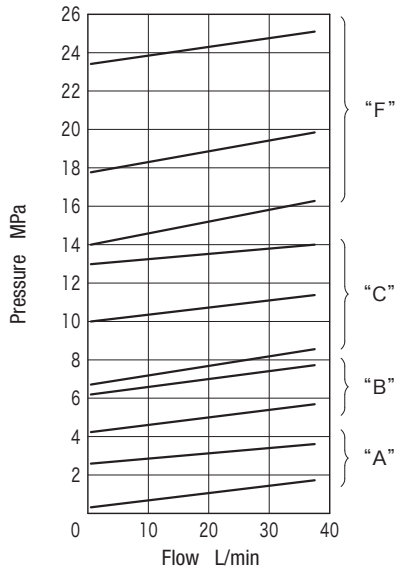
Specifications

Model Code	Max. Working Pressure MPa	Max. Flow L/min	Pressure Adjustment Range MPa		Weight kg
			Code		
TGMRC-3	25	38	A	(0.35) ~ 3	1.5
			B	(2) ~ 7	
			C	(5) ~ 14	
			F	(10) ~ 25	

Note: The minimum pressure differs depending on the flow. See characteristics curves for reference.

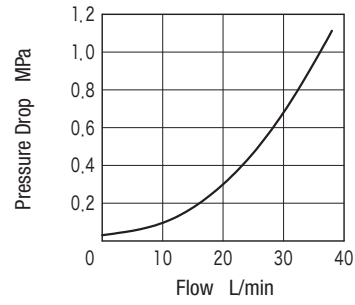
Characteristics Curve (at 20 mm²/s, 50°C) (typical examples)

■ Pressure Override Characteristics



■ Pressure Drop Characteristics

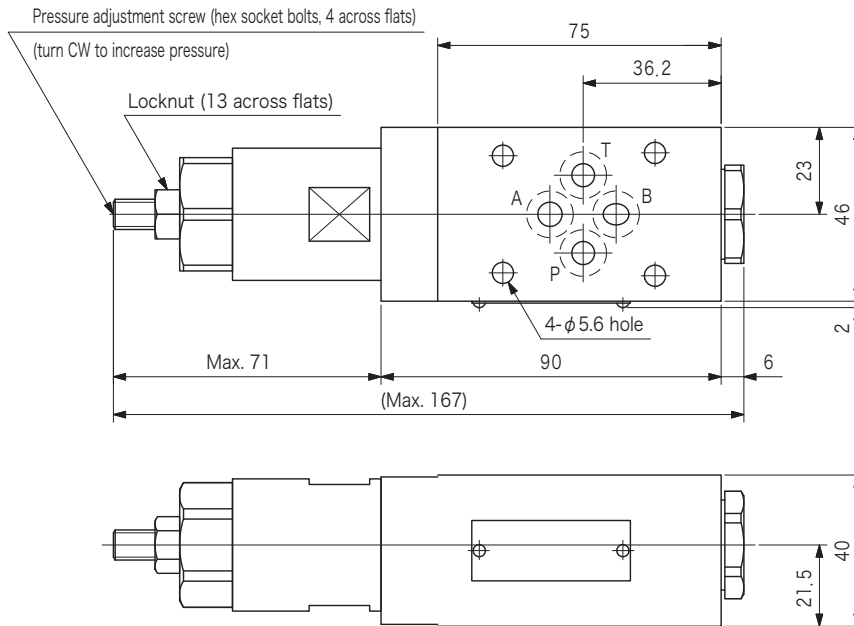
- Free Flow Direction



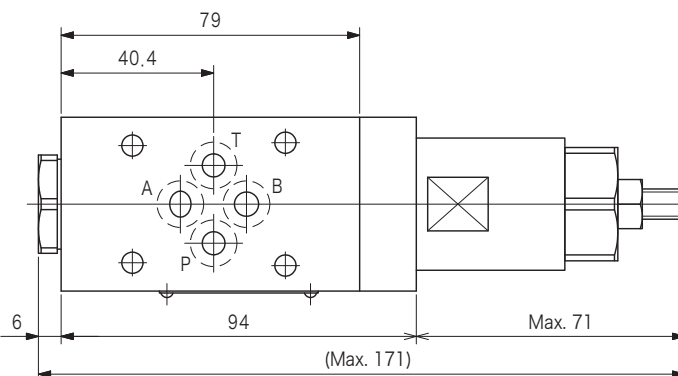
G
18-2

Dimensions

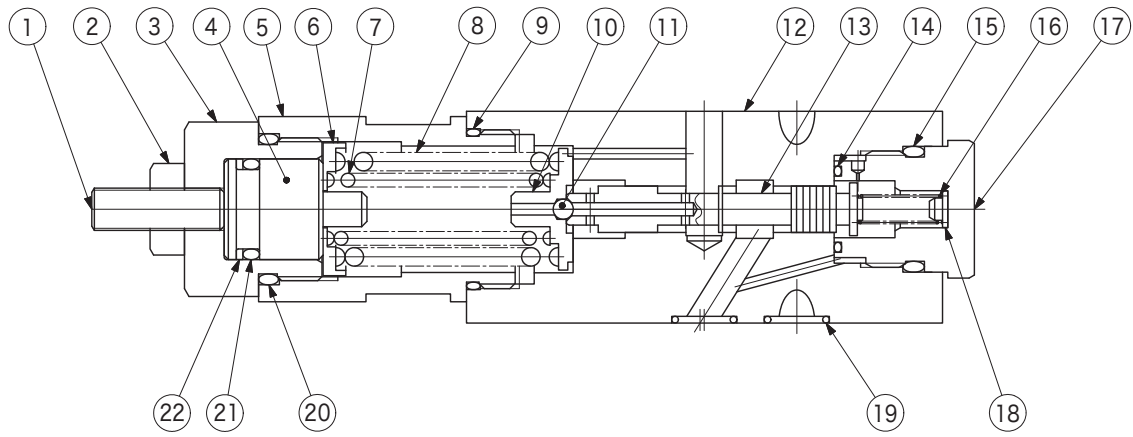
TGMRC-3-AYA-*W-11



TGMRC-3-BYB-*W-11



Construction



No.	Name	Part No.	Standard	Qty
9	O-ring	007902317	AS568-023 (NBR, Hs70)	1
14	O-ring	007901417	AS568-014 (NBR, Hs70)	1
15	O-ring	007911619	AS568-116 (NBR, Hs90)	1
19	O-ring	007901219	AS568-012 (NBR, Hs90)	4
20	O-ring	007911917	AS568-119 (NBR, Hs70)	1
21	O-ring	008001519	JIS B 2401 1B-P15	1
22	Backup ring	008101502	JIS B 2407 T2-P15	1