

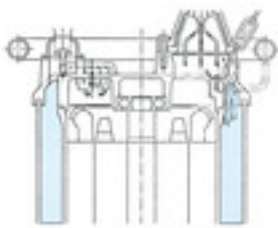


GSZ 3-phase
50Hz

High head - high capacity
- for professional use

4-pole motor for an increased lifetime and greater convenience.





Water jacket

Inner and outer motor casing - flow-through-design - perfect cooling under dry-run-conditions

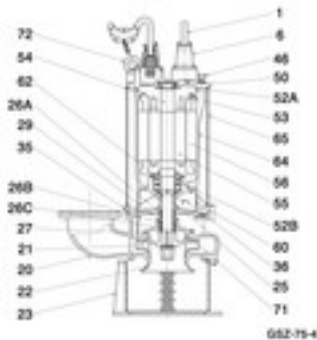
Rugged

A special-steel impeller and suction plate have greatly increased the pump's life. The casing is designed to have wide passing area, thorough thickness and antiabrasion material. 4-pole motor used to achieve a simple structure that demonstrates excellent surability and versatility. Spiral structure, marvelously facilitates the passage of sand, soil, sludge, or slime - without clogging.



Components:

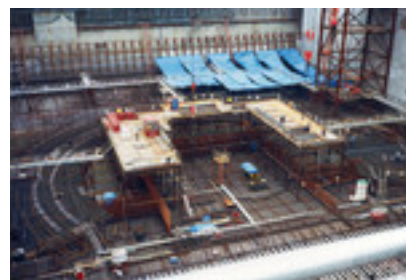
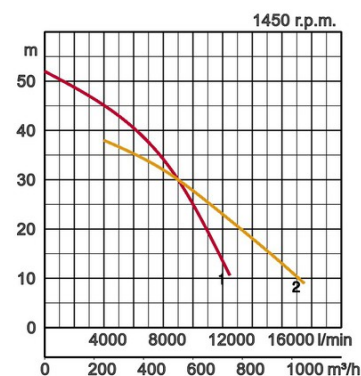
001	Cable	046	Air valve
006	Cable entrance	050	Motor cover
020	Pump casing	052A	Upper bearing
021	Impeller	052B	Lower bearing
022	Suction plate	053.	Miniature protector
023	Strainer	054	Shaft
025	Mechanical seal	055	Rotor
026A	Oil sealing	056	Stator
026B	Oil sealing	060	Bearing housing
026C	Labyrinth ring	062	Bearing cover
027	Seal casing	064	Motor casing
029	Oil casing	065	Jacket
035	Oil plug	071	Shaft sleeve
036	Lubricant	072	Eye bolt



Specifications:

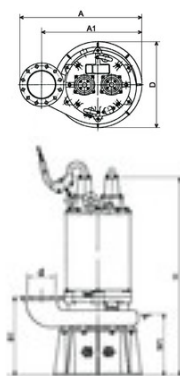
Model	Colour code curve	Bore mm	Motor output kW	Rated current A	Head max. m	Capacity max. l/min	Dry weight kg w/o cable	Max. solid handling ø mm	Pressure resistance max. m	Cable length m
GSZ2-75-4	1	250	75,0	152,0	52,0	12500	1200	25	20	20
GSZ2-75-4L	2	250	75,0	152,0	38,0	17500	1200	25	20	20

ø Discharge bore mm			250
Pumping Fluid	Temperature		0-40°C
	Type of Fluid		Spring water, Rain water, Ground water, Sand carrying water
Pump	Components	Impeller	Closed type impeller
		Shaft Seal	Double mechanical seal
		Bearings	Shielded ball bearings
	Material	Impeller	Stainless steel casting DIN X5CrNi18-10, Chromium iron casting
		Casing	Grey iron casting EN-GJL-200
		Shaft Seal	Silicon carbide in oil bath
Motor	Lubrication		Turbine oil (ISO VG32)
	Insulation		Insulation class E
	Motor Protector (built-in)		Miniature protector
	Phase / Voltage		3-phase / 400V / 50Hz / s.d.
	Type, Poles		Induction motor, 4 poles, IP68
	Material	Casing	Grey iron casting EN-GJL-200
		Shaft	Stainless steel EN-X30Cr13
Cable		Rubber, NSSHÖU	
Discharge Connection			JIS 10K Flange



Dimensions in mm:

Model	d	A	A1	B1	D	H	W1
GSZ2-75-4	250	1050	850	655	708	1733	510
GSZ2-75-4L	250	1050	850	700	739	1778	730



W1: lowest running water level

In the event of abrasive and corrosive utilization, stronger wear and tear will take place naturally in certain components. In this regard, please pay attention to our website www.tsurumi.eu/english/applications.htm.



Contributing to World-wide Prosperity and
Understanding through Worker- and
Environment-friendly Production.

Designed for increased productivity through fully integrated streamlined production systems, Tsurumi's factory in Kyoto (Japan) features a production capacity of a full 1 million pumps per year. Large-scale modern R&D facilities offer optimum conditions for experimenting and testing of even super-large pumps and for developing new products to expand the possibilities and applications of pumps. To provide optimum conditions for our main asset, our workers, as well as for the environment, special emphasis is placed on optimized working conditions with airconditioning, minimized dust and exhaust gas emission, comprehensive recycling and waste recovery.

Tsurumi (Europe) GmbH

Wahlerstr. 10

D-40472 Düsseldorf

Tel.: +49 (0)211-4179373

Fax: +49 (0)211-417937-480

Email: sales@tsurumi.eu

www.tsurumi.eu

We reserve the right to change specifications and designs herein for improvement without prior notice. Our pumps are for professional use only. In the event that Tsurumi (Europe) GmbH have, in exceptional cases taken over, a manufacturer's warranty, this entitles the enduser to assert remedy free of charge against Tsurumi (Europe) GmbH due to any defect to the product occurring during the guarantee period (see below), also then when the warranty claims against the seller do not or no longer exist. In the event of malfunction, which is attributable to the improper handling by the enduser, no guarantee claim shall arise. Further claims shall not result from the warranty, unless if something to the contrary has explicitly been determined. The decision as to whether remedy is effected by way of replacement or repair shall be at the choice of Tsurumi (Europe) GmbH. The claims shall be time barred after a period of three months after expiry of the guarantee period, however, not before expiry of the warranty period which is valid towards the seller. In the event of doubt, the warranty period shall correspond with the warranty period which is valid between the end-user and his seller.



con-GSZ-EN

