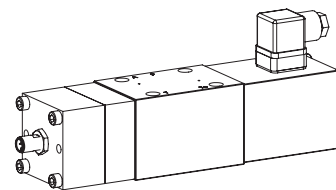


**Solenoid operated poppet valve
with switching position monitoring**

- 2/2, 3/2-way execution
- $Q_{\max} = 80 \text{ l/min}$
- $p_{\max} = 350 \text{ bar}$

NG10
ISO 4401-05

DESCRIPTION

Solenoid poppet valve according to data sheet 1.11-2160 with additional inductive switching position monitoring.

FUNCTION

The contactless sensor transmits the poppet position to a step signal.

- PNP: Positive switching from Plus to Minus.
The load is connected fixed to Minus.
- NPN: Negative switching from Minus to Plus.
The load is connected fixed to Plus.
- NO: Normally open „Closing“
- NC: Normally closed „Opening“

APPLICATION

Use with poppet valves with one actuator for monitoring the switching position.

TYPE CODE

2/2 or 3/2-way execution

A ☐ ☐ 2 10 ☐ - ☐ ☐ # ☐

International standard interface ISO

Medium solenoid ☐ M
Super solenoid ☐ S

2-way (Connections) ☐ 2
3-way (Connections) ☐ 3

2 switching positions

Nominal size 10

Normally closed Solenoid on A side ☐ 1a
Normally open Solenoid on B side ☐ 0b

Other type designation according to type code data sheet 1.11-2160

Polarity / Signal output / Monitoring

PNP / NO / Single ☐ Z603
PNP / NC / Single ☐ Z482
NPN / NO / Single ☐ Z680


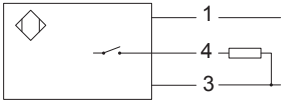
Design-Index (Subject to change)


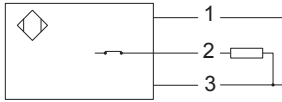
Example: AS32100b-G24-Z603


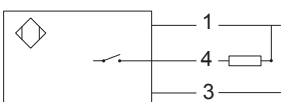
SENSOR SPECIFICATIONS

Nominal voltage 24 VDC
Operating voltage 10...30V DC
Signal current max. 200 mA
Switching frequency 2000 Hz
Protection class IP 68
According to the connection type,
the protection class of the valve can be
lower, see data sheet 1.11-2140

Dimensions M12 x 1
Ambient temperature -25...+50 °C
Fastening torque $M_D = 15 \text{ Nm}$
Peak pressure 500 bar

PNP, NO	
Device receptacle Mating connector 	M12, 4-poles male M12, 4-poles female 1 = Supply voltage + 3 = Supply voltage 0 VDC 4 = Signal
	
Mating connector not incl. in delivery	

PNP, NC	
Device receptacle Mating connector 	M12, 4-poles male M12, 4-poles female 1 = Supply voltage + 2 = Signal 3 = Supply voltage 0 VDC
	
Mating connector not incl. in delivery	

NPN, NO	
Device receptacle Mating connector 	M12, 4-poles male M12, 4-poles female 1 = Supply voltage + 3 = Supply voltage 0 VDC 4 = Signal
	
Mating connector not incl. in delivery	

Signal characteristics			
Signal of the actuator		Signal of the sensor	
		NO Normally open	NC Normally closed
A/B		S1	S1
0		0	1
1		1	0

ACCESSORIES

Mating connector (plug female, confectionable)

– straight, screw terminal

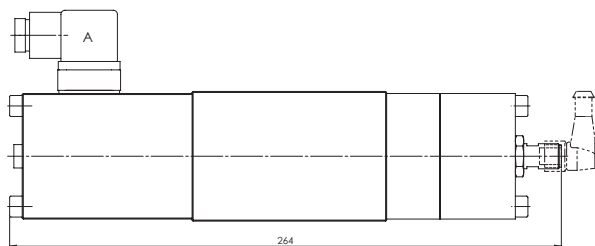
article no. 219.2978

– angled, screw terminal

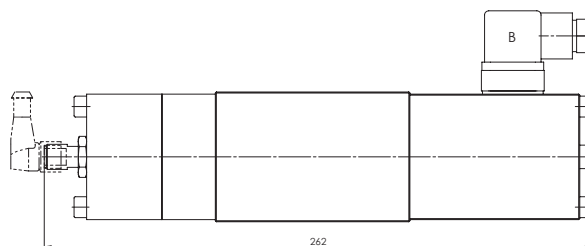
article no. 219.3003

DIMENSIONS

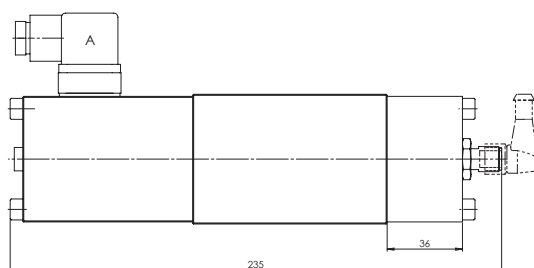
...32101 (solenoid on A side)



...32100 (solenoid on B side)



...22101 (solenoid on A side)



...22100 (solenoid on B side)

