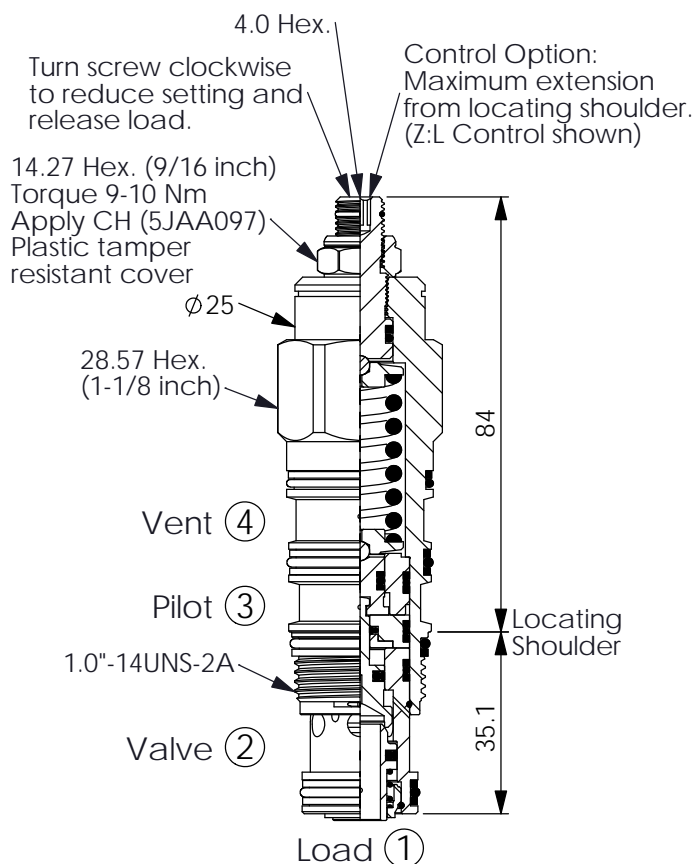
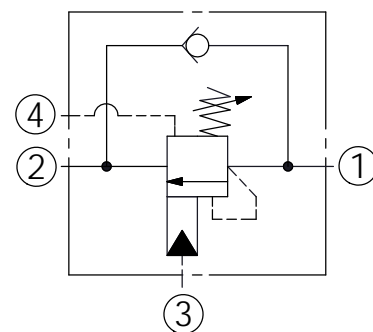


COUNTERBALANCE VALVE (Vented, 420 Bar Maximum Setting)

Ordering Code: **CW-22A-X-Y-Z**



UNIT:mm

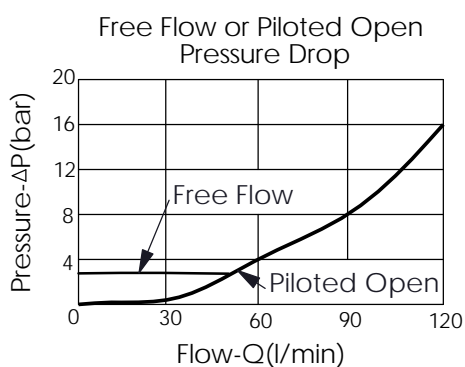


TECHNICAL DATA

Max. Setting:	420	bar
Rated flow:	120	l/min
Cavity-Tooling:	22A-4	
Installation torque:	60-70	Nm
Weight:	0.36	kg

Pressure Setting:

Setting should be 1.3 times maximum load induced pressure.
(We suggest when the Max. setting pressure is 420 bar, the load pressure has to be lower than 320 bar.)



X

PILOT RATIO

4B 2 : 1 (with sealed pilot)

4E 5 : 1 (with sealed pilot)

Y

SPRINGS

ADJUSTMENT RANGES(2.8 bar Cracking Pressure)

F

70-175 bar (140 bar Standard Setting)

G

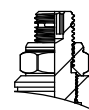
140-420 bar (280 bar Standard Setting)

Z

OPTIONS

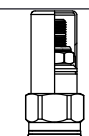
L

Leakproof hex.
socket screw.



C

Stainless Steel
Tamper Resistant
Cover.



CB

Plastic Tamper
Resistant Cover

