

AXIS COMPENSATION MODULES

SERIES ARP

► PRODUCT ADVANTAGES



► Lockable centre placement

When moving your robot, you can fix the equalizer in place so that uncontrolled movements of the workpiece do not take place

► Extremely flat design

This structure reduces the moment load for your robot to a minimum and makes it possible to use smaller and more affordable sizes

► Variable balancing force and moment

Adjust the equaliser to your handling weight by mounting a spring package based on desired rigidity

4

► THE BEST PRODUCT FOR YOUR APPLICATION



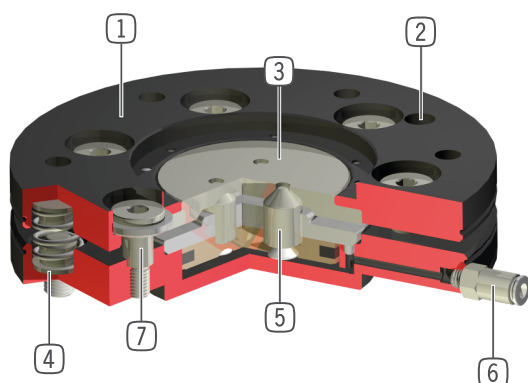
► Our products welcome the challenge!

Extreme conditions, all over the world—our tried and tested components and systems give you endless possibilities.

Find the best product for your specific use:

www.zimmer-group.de

► BENEFITS IN DETAIL



- ① **Robust, lightweight housing**
 - Hard-coated aluminum alloy
- ② **Robot connecting flange**
 - partial mounting circle in accordance with EN ISO 9409-1
- ③ **Locking**
 - 3 locking pistons
 - nitrated steel
- ④ **Spring package**
 - version size 63, stronger one is available
 - version size 100, 3 springs can be removed
- ⑤ **Locking drive**
 - single-acting pneumatic cylinder
- ⑥ **Energy supply**
- ⑦ **Guiding bolts with ball cup**

► FURTHER INFORMATION IS AVAILABLE ONLINE



► Technical Information

All information just a click away at: www.zimmer-group.com

Find data, illustrations, 3D models and operating instructions for your installation size using the order number for your desired product.

Quick, clear and always up-to-date.



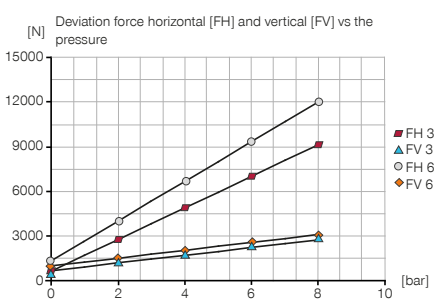
AXIS COMPENSATION MODULES

INSTALLATION SIZE AR160P

PRODUCT SPECIFICATIONS

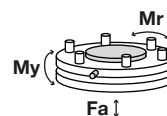


Spring Pack 1 (pre-assembled)



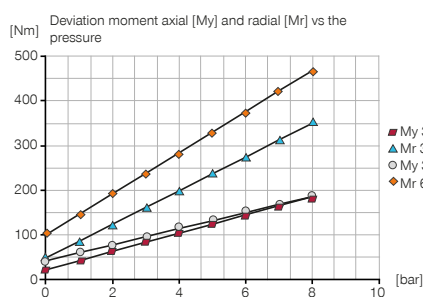
Forces and moments

Shows static forces and moments which may impact on the axis compensation module.

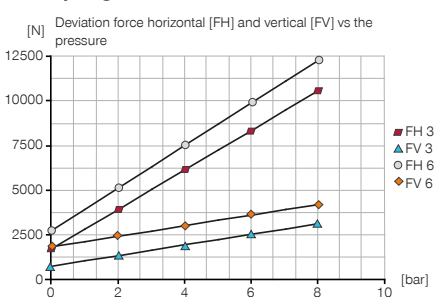


| | |
|---------|------|
| Mr [Nm] | 900 |
| My [Nm] | 900 |
| Fa [N] | 7000 |

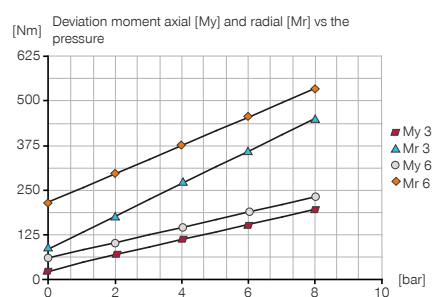
Spring Pack 1 (pre-assembled)



Spring Pack 2



Spring Pack 2

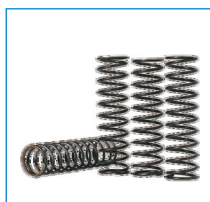


INCLUDED IN DELIVERY



Cylinder Screw

C7984100209



Spring Pack 1 (pre-assembled)

CFED12500



Spring Pack 2

CFED12510

RECOMMENDED ACCESSORIES



Straight Fittings - Quick Connect Style

GVM5



Angled Fittings - Quick Connect Style

WVM5

| Order no. | Technical Data* |
|-------------------------------------------|-----------------|
| Connecting flange according EN ISO 9409-1 | TK 160 |
| Installation Height [mm] | 28 |
| Recommended handling weight [kg] | 60 |
| Horizontal deviation +/- [mm] | 2 |
| Horizontal deviation +/- [°] | 1 |
| Vertical deviation [mm] | 2 |
| Vertical deviation [°] | 1 |
| Centering force when locking [N] | 3000 |
| Repetition accuracy Horizontal +/- [mm/°] | 0.05 |
| Repetition accuracy Vertical +/- [mm/°] | 0.05 |
| Air volume per cycle [cm³] | 14 |
| Operating pressure min. [bar] | 1 |
| Operating pressure max. [bar] | 8 |
| Operating temperature min. [°C] | 5 |
| Operating temperature max. [°C] | +80 |
| Moment of inertia [kg/cm²] | 115 |
| Weight [kg] | 5.6 |

*All data measured at 6 bar

